

Geoff Skene
Manager, Environmental Education

Environmental Education Department Report – April 2007

1. *Take Action*

1.1 Schools commencing *Take Action* for Water

There are eight schools which have commenced *Take Action* for Water this term. They are Queen Margaret's College, Cardinal McKeefry, and St Brigid's schools (all in Wellington); Russell, Canon's Creek, and Glenview Schools (all Porirua); St Patrick's (Masterton); and Wainuioru School (in Masterton District). All of these schools have completed their introductory classroom investigations and their water quality and biodiversity studies in the local environment. They are now planning the rest of the year's activity and how they can *Take Action* or commence restoration projects in their local environment.

At Cardinal McKeefry all of the students in the school are doing the programme. Their water testing took place at the Sanctuary and they are currently working out what their action projects will be for the year. The school has bush on its boundary and a culvert under the playground. The junior students will each be given a plant to look after which they will plant next year. This school is one of the last in the Kaiwharawhara catchment to do *Take Action*, with only Chartwell School outstanding. There has been a concerted effort by the *Take Action* team to have all schools in the catchment learn about the Kaiwharawhara and engage in its care at the same time as its water quality and ecosystem health has been a focus through the combined Greater Wellington and Wellington City Council Project Kaiwharawhara.

1.2 Integration with Enviroschools

Good progress has been made to provide accommodation and support for the regional Enviroschools Co-ordinator in the Environmental Education Department. An agreement between the Enviroschools Trust and ourselves has been drafted and interviews for the position have been held. The co-ordinator will work alongside our *Take Action* team on a day-to-day basis, enabling both programmes to be promoted by each party and schools to obtain the programme that is best suited to their needs.

2. **Otari Bioblitz**

The Otari Bioblitz is a 24-hour race against the clock to identify as many living organisms as possible in the Otari-Wiltons Bush Reserve. It has been initiated by the Otari Trust and Wellington City Council, with assistance from Victoria University, the Royal Society and Greater Wellington. It occurs on 23 March. Our role is to assist three schools in the area – Cardinal McKeefry, Otari, and Wadestown to attend the event and take part in a range of related learning opportunities. Some of these are related to the Kaiwharawhara Stream and others to biota that can be found in the reserve (lizards, bugs etc). The event provides a good opportunity reinforce the messages of *Take Action* and for the children to gain further exposure to the biology and processes of the natural world in their neighbourhood.

3. **Environmental Restoration**

Groups in the environmental care programme have continued their normal summer activities. Many hold weekly weeding bees, or have been watering their plants as the weather has dried out. One enterprising group at Glenside convinced the local volunteer fire brigade to hold their practices at their revegetation site, to the evident benefit of the plants.

Amongst the regular work, some outcomes of note include the Island Bay dune restoration group's open day in March to drum up more volunteers, and the success of the Waitohu Stream group in getting their spinifex to seed when in other parts of the region spinifex seed production has been poor this summer.

We held a workshop on wetland plants and their care in February which was well attended by care group volunteers.

3.1 **Applications for New Care Groups**

When applications closed on 9 March for care groups projects commencing in July of this year we had received eight firm applications (there were a number of others which did not meet the *Take Care* criteria or which were not ready to go ahead at this time). There are four river/stream related applications, three dune projects, and one estuary project. We are currently visiting the sites and assessing the applications but it seems likely the great majority will go ahead. Two of the sites are in Kapiti, one in Lower Hutt, one in the Wairarapa, and three in Wellington.

3.2 **Restoration Day**

Work is well advanced on Restoration Day 2007. This is our annual celebration of the ecological restoration efforts of our care groups and related individuals and groups around the region. The event, on May 12th, brings together practitioners and experts from across the environmental restoration spectrum to take part in workshops and field trips, and learn new skills. The venue this year is the Tauherenikau Racecourse; this is the first time the event has been held in the Wairarapa. The theme for the day is bush restoration and the keynote speaker is the noted ecologist and author, Geoff Park. The day is an

opportunity for participants to meet and exchange ideas with other people involved in restoration projects. It is held in association with the Department of Conservation.

4. Business Sustainability

4.1 New Waste Exchange for the Region

The “No Throw” Wellington waste exchange was launched recently at a function at the City Gallery. The exchange puts businesses, community groups and others together so that any wastes generated by a business can be found a useful home rather than landfilled. The exchange covers most of the north island so the potential for finding a suitable alternative use is now much greater.

4.2 Get Sustainable Challenge 2007

Work has commenced on the Get Sustainable Challenge for 2007. This programme, delivered by the Sustainable Business Network, encourages businesses to adopt more sustainable business practices and provides information and advice to help businesses move in this direction. Greater Wellington is the principal sponsor of the event, as we were last year, along with Wellington City Council, Hutt City Council, and Porirua City Council. It is expected that this year’s Challenge will involve many more businesses than last year. SBN staff have already commenced promoting the programme through a seminar series held in conjunction with the Wellington Chamber of Commerce.

This is a major means by which Greater Wellington can access and assist businesses to take up “greener” business practices. It also provides us with opportunities to promote the Council’s business services and our wider environmental mission. Recruitment of businesses for the Challenge has commenced, with the Awards component of the event occurring in September.

4.3 EnviroSMART

The 2007 recruitment round is underway for EnviroSMART, the two year programme that helps businesses improve their environmental performance and achieve the Enviro-mark New Zealand Gold Standard. Businesses can join the programme from now until June. We had a small response to our story in Elements but we are also pursuing other means which we hope will help spread the message of the benefits of this programme.

Murray McLea
Acting Manager, Environmental Policy

Environmental Policy Department Report – April 2007

1. Maintaining Regional Policies and Plans

1.1 Regional Policy Statement review

Four workshops on the RPS were held with councillors in March. At these workshops, staff presented draft provisions and key directions for topic areas that councillors provided feedback on. A further workshop has been arranged for the afternoon of Wednesday 18 April to provide Councillors with the opportunity to comment on drafts of “over-riding” policies that staff are preparing. The workshop will also consider provisions that have been prepared to address “issues of significance to iwi” that Greater Wellington is required to address in the RPS. We will also present options and a recommendation on how “methods” are to be presented in the RPS.

Following the recent workshops, staff are preparing provisions to be posted, in full, on our website in preparation for meetings with territorial authority representatives, the Regional Land Transport Committee and the Wellington Regional Strategy Committee. These meetings at a political level will occur in May.

1.2 Plan Change 1 to the Regional Coastal Plan

Plan Change 1 to the Regional Coastal Plan was notified in December 2006 following approval by the Policy, Finance and Strategy Committee. This plan change revises provisions for port noise. It is a joint plan change with Wellington City Council and is designed to improve and align the provisions of the Regional Coastal Plan with Wellington City’s District Plan.

Public submissions on the plan change closed on 26 February 2007. Submissions were received from eight submitters. Three submitters supported the plan change in full or in part. Three submitters opposed the provisions. One submitter opposed in part, and another submitter sought changes to the proposed provisions. The summary of submissions was notified 17 March 2007, and further submissions will close on 18 April 2007.

2. Submissions to central government

2.1 Energy

In December, the Government released a suite of policy documents dealing with energy management and climate change. The principal report was the National Energy Strategy, supported by the review of the National Energy Efficiency and Conservation Strategy (NEECS), two documents on managing greenhouse gas emissions (in the short and medium/long term respectively) and a discussion paper on the implications of carbon capture for land use management.

Government is looking for significant collaboration and input from the local government sector as the policies are prepared for ratification. Local Government is also expected to be heavily involved in the implementation of these policies. Greater Wellington staff have taken part in Local Government New Zealand workshops aimed to assist with the preparation of their submission.

Greater Wellington's submission was finalised following circulation of a draft to councillors in the weekly bulletin. The submission endorses Local Government New Zealand's submission and provides input that is specific to this region.

2.2 Contaminated land

In March we made comments on central government's discussion document - *Working towards a comprehensive policy framework for managing contaminated land in New Zealand*. The comments addressed opportunities for change, priorities, a possible national environment standard, local government roles and responsibilities, tracking contaminated soil, liability, accreditation of practitioners, local government training, and national information.

3. Regional Policy Statement and regional plan implementation

3.1 Pauatahanui project

An application to the Ministry for the Environment's Sustainable Land Management Fund has been made by the NZ Landcare Trust in partnership with GW and Porirua City Council. The application is for funding to allow the engagement of a Catchment Co-ordinator over a three year period to carry on the catchment management work with private landowners started by Peter Handford in the Pauatahanui and Waikanae catchments. The outcome of the application should be known by mid- April.

3.2 Waiwhetu Project

Following the application to the Ministry for the Environment's Contaminated Sites remediation Fund in December seeking 100% of the estimated \$6 million cost of cleaning up the Waiwhetu Stream, an offer of 40% was received. As

this amount is insufficient to allow the project to proceed, a meeting was sought with the Minister for the Environment, the Hon David Benson-Pope to explore the possibility of additional funding. At this stage it seems unlikely that additional funding will be forthcoming and officers from GW and Hutt City are now reviewing the options and preparing a report for the next Waiwhetu Stream Advisory Committee on 7 May 2007.

3.3 Wetland Action Plan

The *Wetland Incentives Programme* has proven popular since it began in 2003. As in past years at this time, the programme is fully subscribed. Subsidised weed control and fencing remain the most popular ways to use the incentives offered.

Paul Champion from NIWA was brought down from Hamilton for an assessment of Lake Wairarapa; a focus was on the management of sensitive wetland communities particularly in relation to aquatic weeds. He was also utilised for a wetland plant identification training day, which was attended by more than 30 members of community group.

In the last month, a lot of effort has gone in to a new project at Makara which combines the *Wetland Incentive Programme* with a new care group working on the Makara Estuary. A restoration plan has been developed in conjunction with Clive Anstey, Landscape Architect.

3.4 Freshwater Ecosystems Programme

Following completion of two native fish passes in the Kaiwharawhara Stream catchment, we are now working with care groups on fish passes in the Owhiro Stream and at Hulls Creek. Three small passes are planned in the Owhiro Stream and a single large pass will be constructed at Hulls Creek. Following completion of concept plans for the fish passes, detailed designs are now being drawn up so that resource consents applications can be made.

Ted Taylor
Manager, Environmental Monitoring and Investigations

Environmental Monitoring and Investigations Department Report – April 2007

1. Floodwarning

The Environmental Monitoring and Investigations Department provides a flood warning and monitoring service for the Wellington Region. Rainfall and river level recorders around the Region automatically relay information to the Regional Council Centre and the Masterton office. When specified rainfall intensities or river levels are reached the system automatically alerts staff who implement response procedures.

Since the last meeting of the Committee one event triggered one alarm in the Wairarapa.

The outlet from Lake Onoke blocked on the 14th of February and was still closed at the end of the month. An opening to the sea has not been possible because of a lack of head differential between the lake and the sea due to low flows in the Ruamahanga River. Water levels in Lake Wairarapa fluctuated around the summer target level of 10.15 metres.

2. Rainfall and river flows

2.1 Rainfall

February 2007 was an extremely dry month, with rainfall less than half the long-term average in most places in the Wellington region (Figure 1). In fact much of Wairarapa and Wellington, Hutt Valley, and Wainuiomata, received only 15-30% of rainfall usually expected during February. It was the driest February since 1990 in the eastern Wairarapa hills. The dry weather was due to the predominance of anticyclones and frequent southeasterlies over the region.

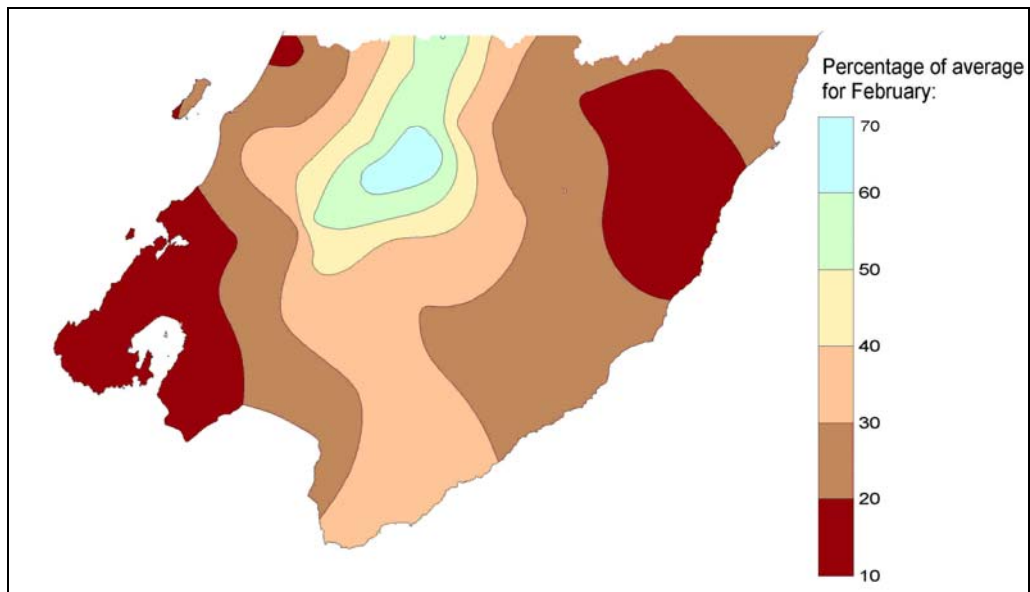


Figure 1: Rainfall during February 2007 as a percentage of average for February

The low rainfall during February follows on from a relatively dry January. The result is that rainfall totals for 2007 to date are well below normal throughout the Wellington region (Table 1). The Kapiti Coast, Tararua Range, Wainuiomata and Wellington have had about half to two-thirds of the average rainfall for the year to date. However, Wairarapa has been much drier with eastern Wairarapa hills receiving only about one-quarter of the average rainfall usually received by the end of February.

Although the last two months have been dry, the longer term pattern has fluctuated between wetter and drier than normal months over the last year. In general, 2006 was wetter than normal in much of the Wellington region, and the drier than normal summer has meant that the 3-month average rainfall deviation from 'normal' has now dropped below zero (indicating medium-term drier than average conditions) (Figure 2). The dry summer may have been linked to El Nino. The El Nino has now faded and neutral conditions prevail in the Pacific.

Table 1: Rainfall at representative monitoring stations for February 2007 and 2007 to date, compared to average

	February 2007 rainfall (mm)	Long-term average for February (mm)	2007 to date (mm)	Average year to end February (mm)	Percentage of long-term average for year to date
Otaki Depot (Kapiti Coast)	16.5	88	103	156	66%
Karori Reservoir (Wellington)	14	77	105.2	157	67%
Wainuiomata Reservoir	15	109	129.5	215	60%
Angle Knob (Tararua Range)	236	394	477	858	56%
Alloa (Featherston)	20.6	69	59.2	133	45%
Tanawa Hut (East Wairarapa)	19.5	78	37.5	142	26%

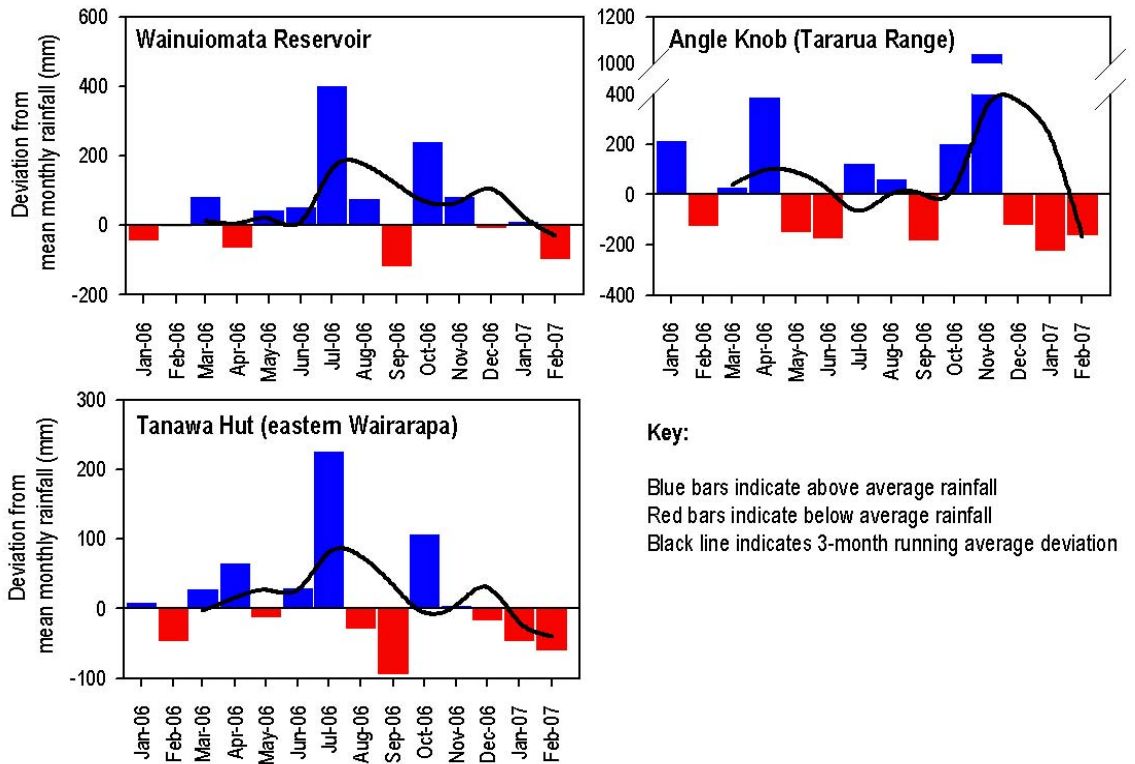


Figure 2: Monthly rainfall deviation from average at key monitoring locations

2.2 Rivers

Average river flows for February tended to be below normal for the month (Table 2). However, the lower than average monthly flow was due to the lack of “freshest” during February. In general, despite the dry weather, the rivers are not yet severely low which is a result of good baseflows due to the wet spring. Flow in many of the rivers, particularly Wairarapa rivers, has dropped below restriction levels for consents to abstract water. Environmental Regulation have issued restriction notices where appropriate.

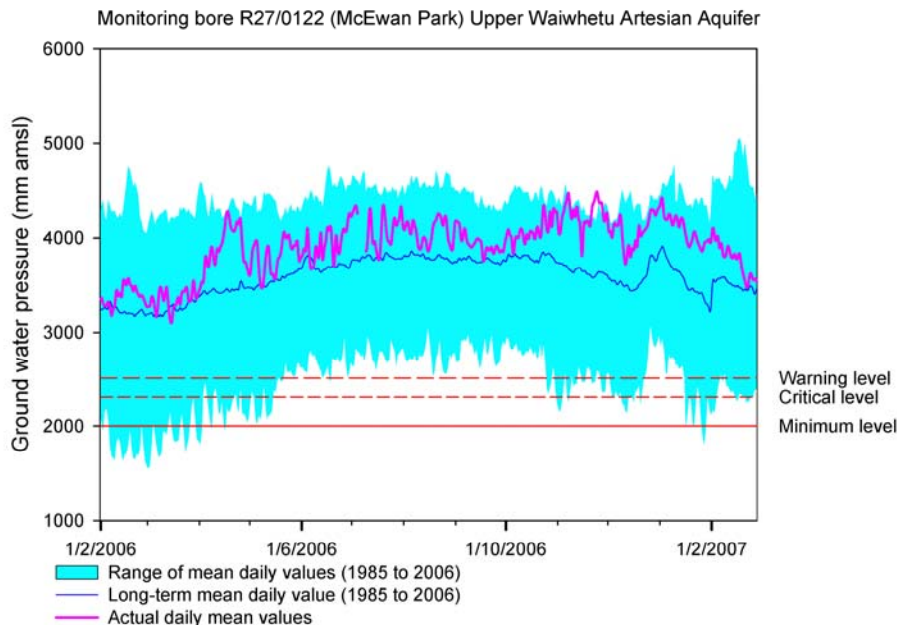
Table 2: February 2007 river flows at selected monitoring stations

	Average flow February 2007	Long-term average for February	Percentage of long-term average
Waikanae River at Water Treatment	2.70 m ³ /s	3.45 m ³ /s	78%
Hutt River at Taita Gorge	9.0 m ³ /s	15.3 m ³ /s	59%
Wainuiomata River at Manuka Track	0.30 m ³ /s	0.38 m ³ /s	79%
Waiohine River at Gorge	10.5 m ³ /s	17.8 m ³ /s	59%
Ruamahanga River at Waihenga	21.3 m ³ /s	46.9 m ³ /s	45%

3. Groundwater levels

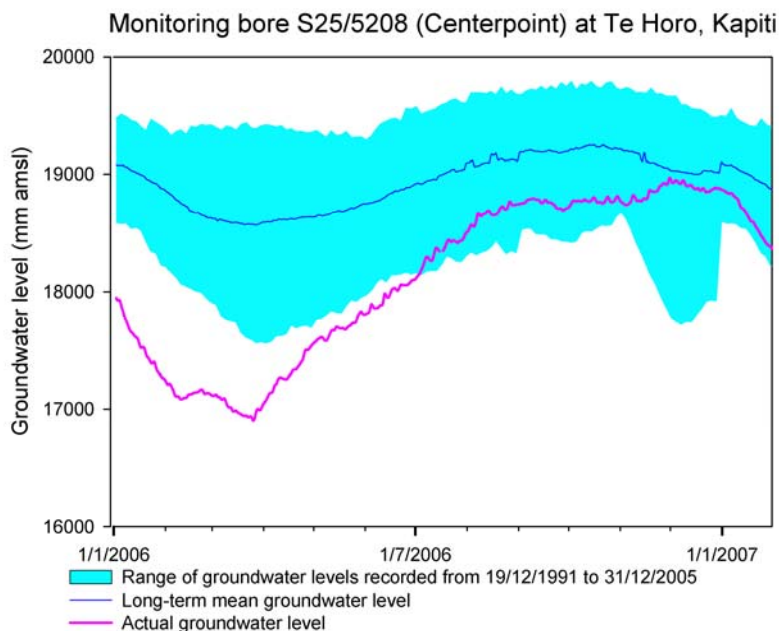
3.1 Lower Hutt groundwater zone

Groundwater levels in the Upper Waiwhetu Artesian aquifer are at their long-term average for this time of year. The levels are well above the trigger levels for saline intrusion.

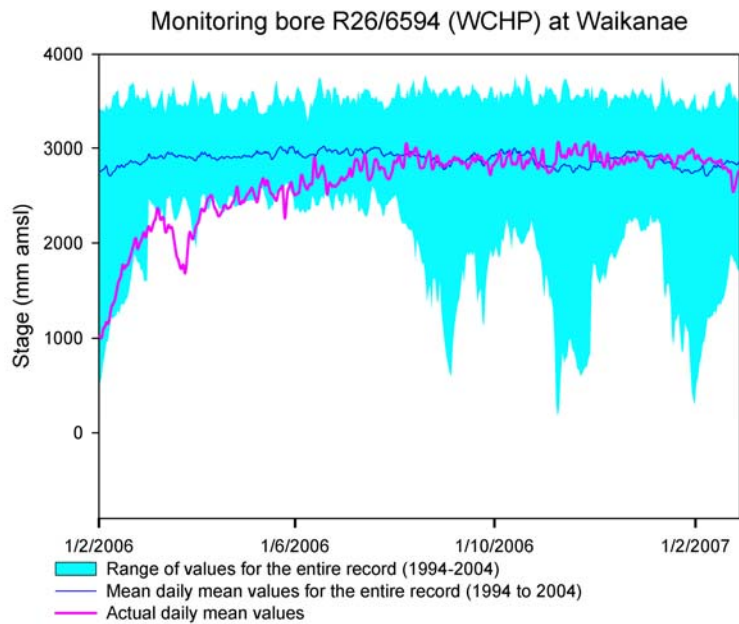


3.2 Kapiti Coast groundwater zones

Groundwater levels at our monitoring bore S25/5208 in Te Horo on the Kapiti Coast are close to the long-term minimum for this time of year. Levels in Te Horo have been below the long-term average for almost two years now – possibly a reflection of low winter recharge in the past few years.



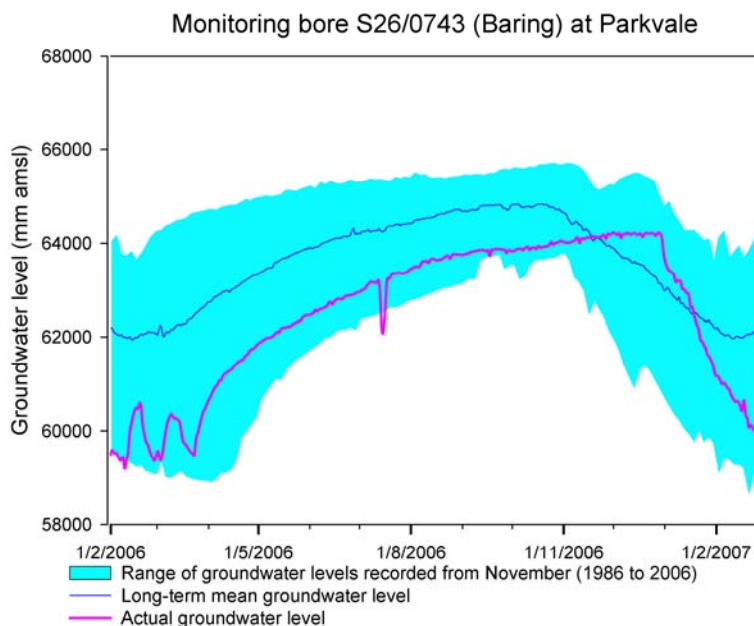
Groundwater levels in our deep confined monitoring bore R26/6594 in Waikanae are at long-term average levels for this time of year. The KCDC well-field had not started operating before the end of February.



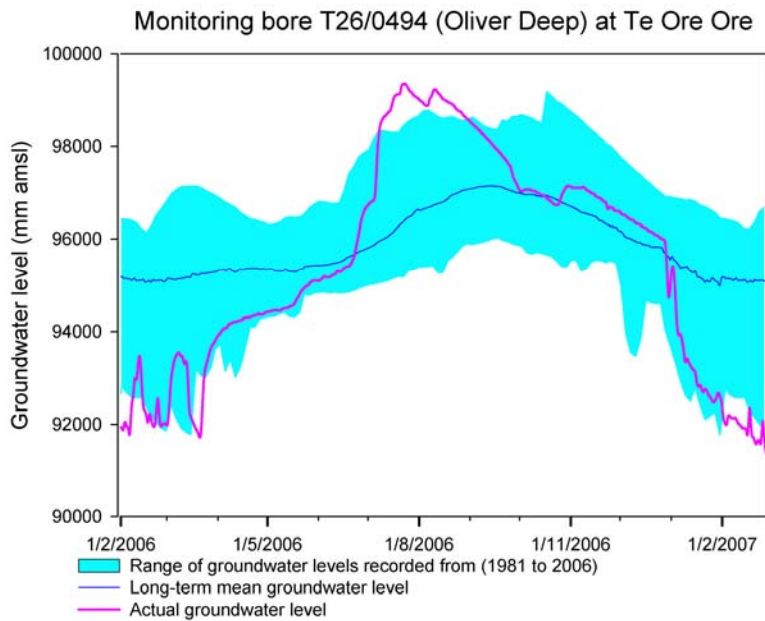
3.3 Wairarapa groundwater zones

Groundwater levels in the Wairarapa have generally dropped reflecting low summer rainfall and irrigation pressure. Levels are lowest in the river recharged, or mixed river/rainfall recharged aquifer systems. Rainfall recharged systems are generally at average levels for this time of year.

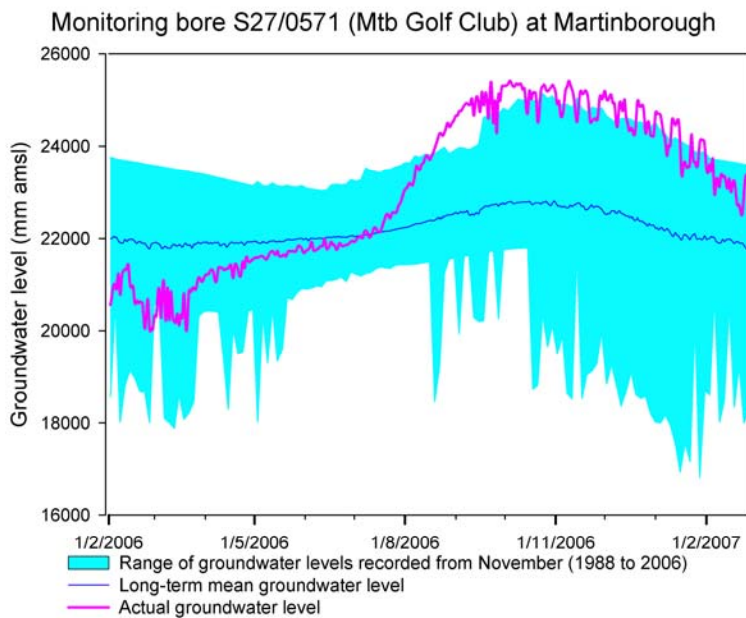
At our monitoring bore S26/0743 in the deep, confined rainfall-recharged Parkvale aquifer levels have dropped to below the long-term median for February, but are still tracking above the long-term minimum.



In the mixed rainfall/river recharged Te Ore Ore aquifer, the levels at our monitoring bore T26/0494 are at the long-term minimum levels. This is a reflection of high irrigation demand, low river levels and low rainfall.



Water levels in our monitoring bore S27/0571 in the rainfall recharged, semi confined Martinborough aquifer are above average for this time of year. This is a reflection of good recharge during the 2006 winter months.



3.4 Groundwater investigations

3.4.1 Sentinel wells

To enhance our ability to detect saline intrusion into the Waiwhetu aquifer three sentinel wells are planned for installation in late March in the Petone foreshore area.

3.4.2 Wairarapa groundwater investigation.

Progress on this project is being reported separately to the Committee.

4. Air quality monitoring

4.1 National environmental standard for air quality

The limits for concentrations of contaminants in air were not exceeded in the period 1 February 2007 to 28 February 2007 in any of the region's monitored airsheds.

5. Contaminated sites

5.1 Contaminated land management

As noted in the last report to the Committee the Ministry for the Environment has released a discussion document "Working Towards a Comprehensive Policy Framework for Managing Contaminated land in New Zealand". We made a submission on this document as noted in the Manager, Environmental Policy's report.

5.2 Selected Land Use Register

The Department maintains the Selected Land Use Register (SLUR) which records sites that because of their land use, past or present, may be contaminated. There are currently 1796 sites on the register. This register is able to be accessed by authorised council and territorial authority staff and this has occurred 1171 time in February. In this period there have also been 23 requests for information from the public.

6. Bathing water quality

This monitoring programme continues and results are regularly placed on the web site. We understand that this site is regularly used by the public and by media organisations.

The lack of flushing flows over February led to extensive cyanobacteria (blue-green algae) mats in some of the regions rivers, including the lower Waipoua River, Ruamahanga River, Hutt River, and Waikanae River.

7. Water quality

7.1 Wellington Harbour

Samples of sediment at a number of sites in the Wellington Harbour have been collected and await testing for a range of parameters. This work is to update our knowledge of harbour water quality and add to work that was last done 20 years ago. We are in the process of obtaining quotes for the analytical testing component of this project.

7.2 Didymo

As noted at the last Environment Committee meeting, Biosecurity New Zealand is working towards a Didymo long-term management partnership programme. This would involve us in a number of organisational and operational roles (e.g., monitoring for incursions) funded by ourselves. A regional meeting is being held in May with Biosecurity New Zealand as the next step towards implementation of the programme.

8. Staff

As a final step in the formation of the Environmental Monitoring and Investigations department Juliet Milne has been promoted to the position of Team Leader, Environmental Science. Juliet will provide an oversight of the work carried out by the environmental scientists in her team along with liaising with our internal and external colleagues.

Al Cross
Manager, Environmental Regulation

Environmental Regulation Department Report – March 2007

1. Consent statistics

The following consents processing data now reflects the entire region. In the period from 21 January to 16 March 2007 we have received 81 consent applications. This compares with 125 received for the same period last year.

Over the same period, we have processed 93 consents. This compares with 94 over the same period last year. One consent was processed out of time as a result of a working day time-frame miss-count, and was only picked up only when the application was already on day 20 and too late to avert the application being processed in 21 working days. This is extremely unfortunate for the officer concerned, and amounts to a simple and rare mistake.

Our median processing time for non-notified consents (excluding s37 time extensions) remains at 13 working days. During the period we have continued to process a substantial number of notified or limited notified consent applications. Bore permit numbers have also continued to remain low.

A summary of the notified consents we are currently processing is also attached for information.

2. Appeals and objections

2.1 Appeals

Meridian Energy Limited – Project West Wind

Mediation recommenced in March to deal with matters raised to them by the confidential ‘minute’ provided by the Environment Court. The minute’s content remains confidential but essentially provides options for Meridian to answer to and resolve outstanding matters of concern for the Court.

Meridian has now advised the Court of a revised timetable to enable amended site plans to be presented, and will also advise whether or not they consider mediation to be completed. Other parties have already begun to respond to the Court regarding the mediation process. Our role has been to consider the potential environmental effects resulting from amended site plans and whether or not the amended plans are within the scope of the original applications.

The approach taken by the Court is unusual to the say the least and we will wait to see how they now deal with the outcomes of the current mediation process, and whether further directions will be provided.

The decisions on the jointly processed consents were released on 21 December 2005. Key issues included landscape effects, proximity of residences to the site, traffic, noise and ecological effects.

Waterfront Investments Limited – Hilton Hotel

Two rounds of mediation have been held in late February and early March to prepare for the Court. These have attempted to clarify the range of matters raised by the appellants (which has not been particularly successful), and set out the list of experts to be used. We have also completed a round of planners caucusing, which has enabled parties to traverse the range of matters including relevant statutory documents (such as key policies) in a less formal setting, involving planners representing the various parties. Unfortunately this process, designed to enable parties to collectively produce an agreed statement to assist the Court concerning key matters and issues at the centre of the appeals, has not been particularly fruitful. There will also be a meeting of traffic engineers to clarify matters of agreement or disagreement, and we have also held discussions with the applicant regarding traffic effects in relation to the use of buses and large service vehicles via the Shed 6 route. It is still proposed that evidence would be exchanged in May 2007, with a Court hearing set down for July and expected to last two to three weeks.

The decision to grant applications for a five-star Hilton Hotel on the Queens Wharf Outer-T, subject to conditions, has been appealed by five parties including the applicant; Miro Property Holdings and Prime Commercial Investments; Wellington Civic Trust and Waterfront Watch; Wellington Indoor Sports (subsequently withdrawn) and Intercontinental Hotel; and including two section 274 parties (other submitters who haven't directly appealed).

Wellington Marine Conservation Centre Trust – Aquarium of New Zealand

Two rounds of mediation and a pre-hearing conference on these appeals concluded on 13 March, with limited progress being made on refining the scope of the appeals. While we are now clear that the appellants have little interest in the nature of the proposed structures within the coastal marine area (CMA) and ongoing discharges from aquarium operations, we have received little guidance from one of the appellants (Chris Webster) on jurisdictional issues raised. However, Judge Thompson has now directed the appellant to clarify matters to the Court including identifying expert witnesses should the appeals reach a full Court hearing. These jurisdictional matters largely deal with the relationship between Foreshore and Seabed legislation and the RMA, and Greater Wellington's right to manage proposed activities in the CMA at Te Raekaihau Point. Evidence will be exchanged in May with a hearing set down for two weeks from 2 July.

The decision to grant the new joint applications for the Wellington Marine Conservation Centre Trust Aquarium of New Zealand (MEC) was appealed by Save the Point Trust, Chris Webster and Lili Prince, with two additional parties joining the appeal. Greater Wellington matters relate to less substantive aspects of the application, including structures in the coastal marine area and discharges associated with construction and operations. WCC-decision related matters include natural character, landscape values, amenity, traffic management and sustainability.

Capacity/Wellington City Council: Western Wastewater Treatment Plant

No further progress has been made on these appeals since lodged; however, WCC has recently requested that the Court allows the mediation to be delayed to July. This is due to other significant commitments tying up their project team regarding the timetable for WCC Clearwater consent applications, including replacement applications for the UWI Carey's Gully sludge dewatering plant (to be lodged in April) and Moa Pt wastewater discharges. We acknowledge that this is an unusual situation for WCC and we will wait for further instruction from the Court presumably after the other parties have responded.

Capacity/Wellington City Council (WCC), New Zealand Forestry Group and Action for Environment Incorporated have appealed Greater Wellington's decision to enable the applicant to continue to discharge effluent to the Wellington South Coast and Karori Stream (including discharges of odour). The decision on the five applications enabled 20-yr durations for the main outfall discharge and air permit, and 10-yr durations for each of the three discharges of milliscreened or untreated effluent to both Karori Stream and the South Coast. Issues covered by the appeals include the term of consent, effects on the receiving environment, and the state and ongoing integrity of the effluent pipeline.

Martinborough Coastal Developments Ltd (MCDL)

Mediation was recently completed on an appeal by D T S Riddiford on a joint decision that granted consent to MCDL in relation to discharges from a community wastewater system connected with for a 30-lot subdivision at Tora, South Wairarapa, with parties agreeing to sign off on a modified community wastewater treatment system. Consent orders from the Environment Court, detailing the agreed conditions from mediation, are expected soon.

A E & S W Benton Partnership

Mediation on appeals of a benchmark-setting decision to decline an application to take groundwater from the Kahutara groundwater zone (affected by a moratorium not to 'accept' further applications) continues. We are still waiting for a response from the applicant and appellants on draft conditions, proposing a shorter term and reduced take in order to monitor effects on other aquifer users, and provide time for GW aquifer water-allocation modeling to be completed. The Court has issued a directive that the applicant responds to all parties by the end of March.

Greater Wellington: Land and River Operations Department (LARO) – Scadden’s stopbank

A decision of the Environment Court to uphold decisions approving applications by Greater Wellington to LARO to upgrade an existing stopbank adjacent to the Ruamahanga River, has now been appealed to the High Court by the applicant, A J Barton. The status and use of a paper road and implications of stopbank upgrade is at the centre of the appeal, which cites that the Environment Court erred in law on several matters in making its judgement. This essentially means that the Court is alleged to have made mistakes in interpreting both key legislation and case law. Both ourselves, and the Flood Protection Department, as the applicant, are considering legal advice before we proceed.

Masterton District Council

Progress has not been made on the appeal by Masterton District Council against the decision on stage two – the Castlepoint sea wall. The onus is on Masterton District Council to come up with an integrated foreshore management plan.

3. Compliance and enforcement

3.1 General

We are about to commence directing low flow restrictions on consented takes across the region, in response to continuing drying conditions.

Meanwhile we continue our programme of regular monitoring of major consented activities and dairy-shed discharges. On the latter, I am dismayed by early reports of growing levels of non-compliance amongst dairy-shed operators. I expect that we will follow up reasonably swiftly particularly in cases of major non-compliance, and we will consider enforcement options where necessary to bring consent holders back into compliance.

3.2 Specific compliance

Taylor Preston Ltd – change of consent conditions process confirmed

We have just recently received confirmation from Taylor Preston Limited (TPL) that they will apply to change consent conditions to incorporate a new multi-million dollar rendering plant intended to significantly improve odour management at the site, and are currently finalising arrangements with landowners Wellington City Council. The proposal is possibly a more substantial undertaking than originally envisaged and, consequently, the timing of application is likely to be delayed until around June to incorporate complex design and operational detail.

The proposal represents a slippage in the original timeframe I proposed, and that is less than ideal given that the review window closes in June. However, in recognition of this, TPL have confirmed that they will lodge a separate change of consent conditions application to modify the review condition. This will

enable a continuous review window to be maintained. In other words, such a condition would in theory enable the consent to be reviewed at any time in the future. Their reasons for lodging this application are to show us and the public that they are serious about carrying through with the proposed plant upgrades. I will ensure that we will play our part to encourage TPL to maintain sufficient momentum with the application process in anticipation of a June lodgement at the outside.

New Zealand Fish Limited – poor practice recently

New Zealand Fish operate a Chicken and Fish rendering facility in Seaview. They are surrounded on three sides by other commercial enterprises who lodge complaints with us from time to time in relation to odour. We have received increases in complaints recently and undertaken proactive monitoring and random inspections. Our investigations show the consent holder to be non-complying on a number of occasions including recorded offensive and objectionable odours.

We have issued 'please explain' letters and met with the plant owner to discuss the unsatisfactory performance and have covered possible enforcement options for GW. It has been pleasing that the consent holder has been proactive about possible changes on site to alleviate the problem.

The business is also amid plans to relocate to Manawatu after August 2007, and we have been clear about our expectations regarding full compliance.

3.3 Abatement notices

We served two abatement notices in the last period to:

- Michael Willbourne of Wash n Shop of Wakefield Street, Wellington, regarding a discharge to stormwater from a car washing operation.
- Graeme Stuart of Masterton to address an illegal stream diversion and culvert on Kuripuni Stream.

We continue to closely monitor activities associated with notices served on J T Cook and Kevin Anderson Combined Projects Ltd relating to the appropriate management and relocation of around 3,000 tyres from a property in the Castlepoint area. I am very concerned about the level of inaction on site to appropriately deal with the tyres and we are currently assessing our options in dealing with this issue

3.4 Infringement notices

One infringement notice has been issued in the last period to:

- Whitby Heights Limited, Porirua, for ineffective sediment control in a subdivision in Whitby.

3.5 Prosecution and enforcement orders

Only one enforcement order is currently underway, following several prosecutions and enforcement order proceedings being resolved by the Court recently. In all cases we have either made significant positive progress or had resounding success in resolving the cases, and receiving awards for costs. It should be noted that this level of success across all major enforcement actions at a given time is possibly unprecedented for GW.

J Gabites

This case relates to enforcement orders against J Gabites farm in Mangaroa Valley for ongoing discharges from pig effluent deposited around the property and earthworks to tributaries of Mangaroa River.

A full erosion and sediment control plan, contaminant management plan and sludge, soil and water sampling information was to be submitted at the last round of mediation. The information submitted was either incomplete or its quality was unsatisfactory. We have now agreed to this information being provided in full over the next two months culminating in a further round of mediation in May, and have in the meantime determined a possible Court date around July should we not be satisfied with progress at the next mediation round.

Burrell Demolition Ltd

I verbally reported to the Committee in February the outcome of sentencing in the District Court in a case against Burrell Demolition Ltd.

This prosecution regards the unauthorised laying of a culvert in a tributary of Owhiro Stream at C&D Landfill, Happy Valley, Wellington. Mr Burrell had elected a trial by jury and had entered guilty pleas prior to the trial.

The Court convicted and fined \$6,000 Burrell Demolition and awarded costs of \$3,125 to GW, noting the deliberateness of the works and that the culvert installation had in fact encouraged potential instability of the fill material rather than alleviating it as purported by the defendant. In sentencing, the Court also considered that a strong deterrent was required to discourage other operators from taking a similar approach possible works.

Enforcement orders have been issued requiring Mr Burrell to provide an engineer's report identifying possible mitigation of the ongoing effects of the culvert, which we've now received.

Tonkin and Taylor and Tenga Pickering Contracting Ltd

I also verbally reported on the outcome of this case against Tenga Pickering Contracting Ltd and Tonkin and Taylor before the Environment Court, concerning the unauthorised 'emptying' of the contents of a large sediment pond at Silverstream Landfill, that entered Hulls Creek and the Hutt River in January 2006.

Earlier we had withdrawn charges against Tonkin and Taylor given their lesser culpability in the discharges, while the two parties had offered environmental restitution (cash to be provided for stream care work in Enaki Stream and Hutt River) in lieu of possible adverse effects associated with the discharges.

Tenga Pickering pleaded guilty to the charges and the Court agreed to restitution offered by the parties of \$10,000. Tenga Pickering also agreed to pay all GW legal costs.

This is an outstanding outcome from the case. The restitution monies will be managed by Greater Wellington to use for Silverstream Railway care group activities and associated environmental enhancement works in the Hulls Creek and Hutt River area.

Paddy Hannan, Paddy Hannan Contracting Ltd and Drogue Construction Ltd

We will soon be monitoring performance against enforcement order requirements following a successful prosecution and re-issuing of enforcement orders against Paddy Hannan, Paddy Hannan Contracting Ltd and Drogue Construction Ltd.

This case concerned a breach of an enforcement order requiring the identification and removal of non-cleanfill material from a cleanfill site in Waiu St, Wainuiomata.

Brooklyn Holdings and Lance James/282 Ohiro Road

We will monitor on-site performance now that we have approved an enforcement order-directed erosion and sediment control plan to prevent excessive ongoing discharges of sediment into Owhiro Stream from the Brooklyn Valley Rise subdivision. We have since signed off on a final erosion and sediment control plan, and works are imminent.

Ohiro Properties Ltd/318 Ohiro Road

These orders relate to restrictions on vegetation clearance, erosion and sediment control and reinstatement of a small stream, which was reclaimed without consent. We expect to soon sign off on an erosion and sediment control plan, and will require applications connected to stream reinstatement works.

3.6 Take Charge

Again, the *Take Charge* programme was less active than usual in the period given reduced staff numbers and priorities in significant enforcement work by the team. Initial audits of the Grenada North Industrial area to identify key businesses continue towards completion. This has been a major undertaking to date and the level of cooperation and interest from businesses has been pleasing.

The *Take Charge* programme for the period is discussed in the Pollution Control Report (report 07.151).

3.7 Significant incidents

Dumping of chicken manure and carcasses – Terawhiti Station

We have completed our initial investigations of illegally dumped chicken manure, chicken carcasses and eggs in a gully head on Terawhiti Station and resulting direct discharge of manure into a tributary of Oteranga Stream.

This is a serious incident of the highest order and we are now seeking advice on enforcement options.

Other significant incidents for the period are discussed in the Pollution Control Report (report 07.151).

4. Major resource consents and other matters

4.1 Key notified consents update

Fully Notified

Capital and Coast District Health Board

This is an application to discharge contaminants, including particulates, to air from a number of gas and diesel fired appliances at Wellington Hospital, including the hospital's Total Energy Centre. We are still waiting for final approval of the draft conditions by the applicant prior to finalising the Officer's report.

N & E E Reid

We have not received any appeals for a decision approving applications from N & E E Reid to replace and extend on existing consents for the discharge of piggery effluent to land and odours to air (from a herd of 11,000 animals) north of Clareville, Carterton.

There was some reaction through the media about the consent duration (15 years), potential effects of odour and discharges to surface and ground water, and compliance monitoring. Our efforts now extend to working with the consent holder to carefully map out how condition requirements will be implemented and GW's role in monitoring.

In the end the media did not take up our invitation to discuss the decision, related consent conditions and subsequent process, and we have subsequently prepared a press release to discuss both the decision and issues for compliance monitoring.

Prema Investments Ltd

A hearing was held on 4 March for joint applications from Prema Investments, relating to discharges of communal wastewater to land from a 6-lot subdivision at Whangaimoana, South Wairarapa. A decision is expected by 25 March.

Stronvar Properties Ltd

These are applications for a 56-lot subdivision at Stronvar, Masterton involving applications for discharges of wastewater (from a community waste water scheme) and sediment from earthworks, taking water (for communal water supply), and erecting a dam to establish an amenity and stormwater treatment lake.

We expect to soon receive further information on a range of substantial matters including community waste water treatment, and the operation and integrity of the proposed lake.

Masterton District Council

Applications for managing the closure of the Masterton Landfill and provide for ongoing waste management related activities has been placed on hold for further information. We understand that information requested is pending, and once received we will then publicly notify the applications.

Palliser Bay Station

Three submissions were received on an application for discharges from a community wastewater scheme associated with a proposed 22-lot subdivision on Cape Palliser Road, South Wairarapa. Submissions have not raised issues relating to wastewater discharges, and we will look at options for the way this application will now be reported and determined.

Webstar

Replacement applications from Webstar (Blue Print Group Limited), Masterton, to discharge fine particle matter (PM₁₀) and other contaminants to air from printing and gas-fired boilers were notified on 14 February. Additional discharges from a new proposed printer form part of this application. Our assessment will need to consider air quality within the Masterton air shed, which sometimes exceeds NES for Air thresholds for PM₁₀ of 50 ug/m³.

Staites Drive Developments Limited

92 submissions have been received for various applications associated with a proposed 100-lot subdivision at Staites Drive, Whitby. The substantive matters for GW relate to erosion and sediment control and the piping of intermittently flowing streams. Applications are set down to be heard in mid April unless issues with submitters are resolved in the interim.

GW Flood Protection Department

This is an application to permanently divert flood waters from a proposed 2.1 km extension to Chrystalls stopbank in Otaki. The proposal is intended to divert flows in excess of a 50-yr events. Submissions close on 30 March. These applications would be heard jointly with KCDC, who will hear applications for a designation (notice of requirement) for the associated land.

Limited Notified

Hutt City Council

This is an application for retrospective emergency and ongoing river re-alignment works on Wainuiomata River adjacent to the Coast Road and Wainuiomata Golf Club, which are being processed on a limited notified basis. One submission was received from Wainuiomata Golf Club. A further pre-hearing meeting was held in February, and the various parties are still considering draft conditions and mitigation options.

Kaitawa Crematorium

In a major turn of events, we expect to soon receive notice to withdraw the current Kaitawa Crematorium applications, originally proposed for central Waikanae. We have just received a fresh application for a site in Waikanae cemetery – which has been negotiated with KCDC.

The applications will require a preliminary assessment before we can determine how they will be processed (non-notified versus limited notified).

M B and H F Herrick

Summer monitoring continues to provide assessment information to assist the consideration of replacement applications to take groundwater for irrigation, at Taumata Island, Carterton. As previously discussed, opposing submitters are concerned about potential effects on nearby takes and Taumata Ox-bow reserve wetland, and despite misgivings from submitters, the applicant is collecting information from the current take over this summer.

Formway Furniture

This application to discharge contaminants from the manufacture of plastic furniture parts, at Gracefield, Lower Hutt was granted on 16 March. Earlier we had received just one submission from Regional Public Health (RPH), and negotiated an appropriate set of conditions.

Hutt City Council

We have received three submissions for applications to place a channel structure and divert stream flow in a small stream adjacent Marine Drive, Eastbourne, for flood protection purposes. A pre-hearing was held recently and the parties will soon consider mitigation options draft conditions.

4.2 Department projects

Resource Management Charging Policy Review

Richard Waddy presents a report (report 07.139) on the draft revised policy in this order paper. This work has been particularly intense to date for the core project group led by Richard and represented by senior Environmental Regulation staff, including Paula Pickford, Stephen Thawley and myself. A

pleasing factor is that the core group have all been involved in various past charging reviews, so we have limited any desires to reinvent the wheel.

Muddy Waters and Small Streams Issues Workshops

Work has commenced within the department to develop and provide two sets of workshops covering Erosion and Sediment Control issues (for contractors specifically) and issues affecting the development and management of small streams (for territorial authority staff, contractors and consultants). These will run before July this year.

4.3 Staff issues

I continue my recruiting programme, for existing vacancies in both Pollution Control and Consents and Compliance, and soon will look to firm up positions connected to the new departmental structure.

I am very pleased to tell you that Stephen Thawley has been appointed permanently to the team leader position with the Masterton Consents and Compliance team after acting in this role over the previous 15 months. Stephen has worked at Greater Wellington for about ten years and continues to bring extensive resource management experience to the department and division.

Tim Strange sadly will be leaving the Pollution Control team in late April to return to England. Tim has excelled in his pollution control role, providing solid expertise and leadership in process areas, investigations and enforcement. Tim has strong personal pulls drawing him home and we wish him well.

Meanwhile we are in the final stages of recruiting for two replacement pollution control officers to replace Nic Conland and Tim Strange; and we have commenced interviews for a full time senior resource advisor in the Wairarapa team to replace staff returning from parental leave on a part time basis. Speaking of which, I welcome back Susannah Guscott from parental leave to the Wairarapa team.

Applicant	Proposal	Date Consent Lodged	Date Submissions Closed	Number of Submissions Received	Pre-hearing Held	Hearing Held	Hearing Committee Members	Date Decision Released	Granted or Declined
Masterton District Council	To construct a sea wall at Castlepoint.	02/06/04	09/07/04	10	-	14-15 March 2005	Cr Chris Turver Aka Arthur (Iwi) Dr Michael Hilton (Minister's appointee)	11/04/05	Granted – under appeal
LARO / Flood Protection	To relocate a stopbank and extend the bed of the Ruamahanga River, South Wairarapa.	16/08/04	29/09/04	3	09/12/04	23/03/05	Christine Foster	02/05/05	Granted – under appeal to the High Court
A E & S W Benton Partnership	To take groundwater from two bores for irrigation purposes, Battersea, South Wairarapa.	09/12/04	09/02/05	9	17/03/05	11/10/05	Christine Foster Tony Cussins	09/03/06	Declined – under appeal
Martinborough Coastal Developments Ltd	To discharge contaminants from communal wastewater system to land and air arising from 30 lot subdivision.	04/02/05	19/05/05	22	-	2-3 November 2005	Paul Thomas Roger Land	14/12/05	Granted – Appeals resolved. Consent order issued.
Wellington Marine Conservation Centre 2	Establish an aquarium at Te Raekaihau Point, Wellington.	02/05/06	07/06/05	Approx 9000	-	Commenced on 8 August, completed 7 September 2006. (approx. 13 days)	Helen Tobin Ray O'Callaghan Euan McQueen	19/10/06	Granted – Under appeal
N & E Reid	To discharge of piggery effluent to land, Carterton.	30/06/05	16/02/06	29	13/03/06	11-12 December 2006	Cr Chris Turver John Read Liz Burge (Iwi)	17/01/07	Granted
Meridian Energy Limited	Various land use, discharge, and coastal permits associated with the development of the "West Wind" wind farm proposal, Makara.	01/07/05	10/08/05	4000+	-	September to November 2005.	Jim Lynch David McMahon	21/12/05	Granted – under appeal

Applicant	Proposal	Date Consent Lodged	Date Submissions Closed	Number of Submissions Received	Pre-hearing Held	Hearing Held	Hearing Committee Members	Date Decision Released	Granted or Declined
Waterfront Investments Ltd	'Hilton Hotel' building and public space proposal, Queens Wharf, Wellington.	23/12/05	27/02/06	Approx 1000	-	Hearing commenced on 3 July, adjourned on 31 July, and closed 8 Aug.	Cr Chris Turver Cr Chris Laidlaw David McMahon Stuart Kinnear Miria Pomare (Iwi)	19/09/06	Granted - under appeal
WCC Capacity	To discharge treated and disinfected wastewater from the Western WWTP, South Karori, Wellington.	29/03/06	08/05/06	14	-	Hearing held - commenced on 19, 20 and 27 October.	Cr Glen Evans Miria Pomare (Iwi) Byrdie Eyres (Minister's appointee)	21/12/06	Granted - under appeal
Prema Investments Ltd	To discharge communal waste water associated with a 6-lot subdivision, Whangaimoana, South Wairarapa.	24/07/06	22/11/06	5	-	5 March 2007	Cr Rick Long Liz Mellish (Iwi) Cr Bev Clark (SWDC) Mayor Adrienne Staples (SWDC) Peter Craig (SWDC)	Awaiting decision	-
Stronvar Properties Ltd	Various activities associated with subdivision including discharges of communal waste water, soil disturbance, taking water, and constructing an amenity and treatment dam, Stronvar, Masterton.	24/07/06	15/12/06	24	-	Hearing delayed as applications on hold.		-	-
Palliser Bay Station	To discharge communal waste water associated with a 22-lot subdivision, Cape Palliser Rd, South Wairarapa.	24/01/07	22/2/07	6	-	Expect to be resolved without hearing.		-	-
Capital and Coast District Health Board	To discharge particulates associated with the use of gas and diesel fired boilers.	08/06/06	31/07/06	3	18/08/06	No hearing required.		-	-

Applicant	Proposal	Date Consent Lodged	Date Submissions Closed	Number of Submissions Received	Pre-hearing Held	Hearing Held	Hearing Committee Members	Date Decision Released	Granted or Declined
Webstar (Blue Star Print Group Limited)	To discharge particulates and other contaminants to air from three heatset lines, driers and thermal oxidisers associated with printing operations, Ngamutawa Rd, Masterton.	08/02/07	22/02/06	2	14/03/07				
Greater Wellington Flood Protection Dept.	To permanently divert Otaki River flood flows associated with the extension of Chrystalls stopbank, Otaki.	15/2/07	30/3/07						
Staithe Drive Developments Ltd, Staithe Drive North, Whitby	Various activities associated with subdivision including discharges of sediment-laden stormwater, piping of intermittent streams and damming stormwater in detention dam.	21/11/06	12/01/07	92		Scheduled for April	Cr Chris Turver Cr Margaret Shields		
Hutt City Council (Limited Notified)	To undertake erosion mitigation works in Wainuiomata River, including disturbance and diversion work.	07/08/06	20/10/06	1	20/12/06 15/02/07	Parties to consider mitigation options & draft conditions.	-	-	-
M B & H F Herrick (Limited Notified)	Replacement consent application to take groundwater for irrigation, Taumata Island, Carterton.	16/05/06	8/09/06	4	24/10/06	Hearing delayed as application on hold	-	-	-
Kaitawa Crematorium (Limited Notified)	To discharge contaminants to air associated with gas-fired crematorium appliances, Waikanae.	25/10/06	9/02/07	14	-	-	-	-	-

Applicant	Proposal	Date Consent Lodged	Date Submissions Closed	Number of Submissions Received	Pre-hearing Held	Hearing Held	Hearing Committee Members	Date Decision Released	Granted or Declined
Formway Furniture (Limited Notified)	To discharge contaminants from construction of plastic furniture parts, Gracefield.	17/07/06	12/01/07	2	-	No hearing required – issues resolved with submitters.	-	-	Granted - Consents issued
Hutt City Council, Marine Parade, Eastbourne (Limited Notified)	Land use consent, water permit and coastal permit associated with works to modify the channel of an unnamed stream, for flood mitigation purposes.	1/3/06	21/2/07	3	9/3/07	Expect to be resolved without hearing.			

Mike Pryce
Manager, Harbours

Harbours Department Report – March 2007

1. Harbour navigation aids

The main submarine power supply cable to Point Jerningham light failed in February 2007, causing the back-up battery to go flat. This was replaced by a temporary solar power supply. Reports from shipping indicate no noticeable difference between the mains-powered light and the solar-powered replacement, so it is likely that the light will become a permanent solar installation.

Steeple Rock lighthouse fendering became loose and was in danger of breaking-away. This has been re-secured.

Work for the routine three-yearly change-over of Barrett Reef buoy is still progressing.

All other navigation lights operated satisfactorily.

2. Oil Pollution

Three reports of “oil pollution” were reported during the period - none of which required a response from Harbours staff.

Two Greater Wellington Flood Protection staff members attended a Field Operations (Marine Oil Pollution Response) Course in Christchurch during February.

3. Other Activities

- The Beacon Hill upgrade planning is progressing, but the construction timeline extends well-beyond that anticipated, extending to February or March 2008.
- Harbours staff has been liaising with Wellington City Council, Hutt City Council and Porirua City Council to update and improve safety signage around Porirua and Wellington harbours.

This includes:

- New signs at the Seaview Marina launching ramp,
 - New signage placed at Days Bay Wharf, with safety information for swimmers about the ferry operations from that wharf,
 - Damaged and vandalised signage replaced at Seatoun's water-ski lane, Dorrie Leslie Park launching ramp and on Point Halswell light.
 - In Porirua there has been liaison with PCC on the placement of warning signage for swimmers at the launching ramp between the Mana Bridges.
- In conjunction with Environmental Monitoring and Investigations, the Harbour Rangers were part of an on-going monitoring and cleanup of broken glass at Plimmerton beach.
 - The weekend of 10 - 11 March 2007 was a busy one on Wellington Harbour with Offshore Powerboat racing, North Island Waterski Championships and the Dragonboat Festival.
 - On 11 March 2007 the Powerboat Club held races on Porirua harbour. Harbour Ranger John Tattersall handled several issues that arose from these events.
 - Ollie Muller has been our additional summer Harbour Ranger since late December, but completed this work on 23 March to continue his marine engineering training. He has been a valuable addition to our team during this period.

4. Port & Harbour Safety Code

Marico Marine New Zealand has been engaged to continue work for us to complete the Safety Management System (SMS) for Wellington. On 8 March 2007 an initial draft of the Harbour Safety Plan was presented to Harbours for further discussion.

Rian van Schalkwyk
Manager, Emergency Management

Emergency Management Department Report – April 2007

1. Civil Defence Emergency Management Group

1.1 Exercise Cruickshank (Influenza pandemic exercise)

The Ministry of Health (MoH) is coordinating a Pandemic Exercise Programme over 2006/07 and comprises of two major exercises, Makgill and Cruickshank. The Exercise Programme assesses New Zealand's response plans to a pandemic.

On 9 November 2006, the MoH ran Exercise Makgill over a 12 hour period. The Exercise assessed the whole of the health sector's ability on cluster control ("stamp it out") stage of response to a full pandemic. This exercise used an "enhanced" table top approach in order to realistically simulate the kinds of things that could happen in a real pandemic.

Exercise Cruickshank is a national exercise that will be led by MoH over four full days in May 2007.

Exercise Cruickshank will practice the plans set out in the New Zealand Influenza Pandemic Action Plan (NZIPAP) and will validate the intersectoral response at all four stages. Exercise days are spread over four weeks, and will cover national, regional and local responses.

Exercise Cruickshank, a practical exercise, will include a combination of tabletop and discussion exercise formats and a limited amount of operational deployment.

The key objectives of the Exercise Programme are to:

- Gauge the capability and capacity of the health sector and central and local government agencies to respond to and recover from an influenza pandemic.
- Review the processes for coordination, communication, leadership and governance during a pandemic.
- Provide a forum for intersectoral review and discussion of pandemic plans.

The exercise will be run as follows:

Day One: Keep It Out – 10 May 2007: To strengthen intersectoral action to keep pandemic influenza out of New Zealand.

Day Two: Stamp It Out – 16 May 2007: To strengthen intersectoral action to stamp out pandemic influenza out of New Zealand.

Day Three: Manage It – 17 May 2007: To strengthen intersectoral action to manage pandemic influenza with a 40% incidence rate and a 2% mortality rate.

Day Four: Recovery – 23 May 2007: To familiarise agency participants with issues that will need to be addressed when recovering from an influenza pandemic with a 40% incident rate and a 2% mortality rate.

It is envisaged that this Exercise will be a discussion based tabletop exercise only, with no real scenario testing or injects.

During the Exercise days operational and response agencies will use the Co-ordinated Incident Management System (CIMS) to co-ordinate their response to the Scenarios.

1.2 CDEM Conference 2007 – ‘Keeping Pace: Technology and Modern Emergency Management’

Wellington will be hosting this year’s conference.

The Institute of New Zealand Fire Engineers has expressed an interest in helping us with the organisation. A ‘Conference Planning Committee’ has been established comprising Rian van Schalkwyk and Craig Hamilton (Greater Wellington Regional Council), Desley Monks (Kapiti Coast District Council), Bill Butzbach, Grant Haywood, Gary ward, Russell Wood, Bernie Rush and Charlie Dickson (New Zealand Fire Service).

It is planned to hold the two-day conference at the Wellington Convention Centre on 4 & 5 October 2007 with approximately 250 - 300 delegates in attendance.

A conference of this scale brings emergency management role-players together, helps build relationships and highlights what other organisations do in an emergency. It also provides an opportunity to get an international perspective on emergency management from overseas speakers.

1.3 CDEM Group Work Programmes

1.3.1 CDEM Group Recovery Plan

To ensure that the Group has robust methods and relationships in place for providing coordinated efforts and processes to effect the immediate, medium and long-term holistic rehabilitation of a community following a disaster.

The draft CDEM Group Recovery Plan has commenced.

Recovery is described as a developmental, and a remedial process encompassing the following activities:

- Minimising the escalation of the consequences of the disaster
- Rehabilitating the emotional, social and physical wellbeing of individuals within communities
- Taking opportunities to adapt to meet the physical, environmental, economic and psychosocial future needs
- Reducing future exposure to hazards and their associated risks.

There are two objectives identified for recovery, namely the implementation of effective recovery planning and activities for the physical impacts of disasters, and the implementation of effective recovery planning and activities for the social and economic impacts of disasters.

The draft CDEM Group Recovery Plan addresses the following activities:

- the assessment of the needs of a community affected by the emergency; and
- the co-ordination of resources made available to the community; and
- actions relating to community rehabilitation and restoration; and
- new measures to reduce hazards and risks

1.3.2 Debris Disposal Arrangements

To ensure that adequate arrangements are in place for the effective disposal of debris during emergencies.

The Institute of Geological Nuclear Sciences (GNS) has recently started a project “Pre-event recovery planning for land-use in New Zealand”. This project addresses issues and solutions before an event occurs and will also include how emergency consents can be gained in advance for spoil disposal sites, including those for contaminated materials (for example road slip material, building debris), disposal of refuse, etc.

GNS hosted their first workshop on 1 March 2007. The meeting was attended by invited representatives comprising GNS staff, emergency management staff and resource management planners.

A framework has been constructed to assist these planners in undertaking pre-event recovery land-use planning.

1.3.3 Rural fire management alignment

To ensure that there is synergy between the CDEM Group and rural fire management structures.

This project is yet to commence.

1.3.4 Emergency management agency communications system implementation

To ensure that arrangements are in place for vital emergency management agencies to communicate effectively during any emergency.

This project has been completed. Works carried out include:

- A regional satellite network has been installed in August 2006 linking the Group CDEM Emergency Operations Centre (GEOC) with all the cities and district CDEM operations centres. We now have satellite links with all the territorial authorities in the region, the Ministry of CDEM, Geological Nuclear Services, other CDEM Groups and Fulton Hogan Contractors.
- An additional radio repeater system has been purchased in December 2006 and will be installed (as soon as we have a frequency allocated from the Department of Economic Development) to enhance radio communications along the west coast (Wellington to Wanganui).
- Additional radio links have been provided to Regional Public Health, Ministry of CDEM and Radio New Zealand. We now have direct radio access to these facilities.
- A separate telephone (PABX System) has been purchased in September 2006 and installed in the GEOC.
- An information management system has been purchased in August 2006 from RMD Databases and installed in the GEOC. Wellington City Council and Porirua City Council have similar systems.

1.4 Public Education Initiatives

The Civil Defence Emergency Management Act 2002 (the Act) requires each CDEM Group to promote and raise public awareness of hazards and risks and the Act itself (s.17 (1) (a) (g)).

The CDEM Group has recognised the importance of public education by including a CDEM Group Public Education Strategy in its work programme outlined in the CDEM Group Plan. The Strategy is scheduled for the 2007/2008 financial year.

A CDEM Public Education Group has been formed to begin planning for 2007 activities whilst looking forward to the development of the Group Public Education Strategy. A Terms of Reference for this Group is currently being developed.

In the meantime, the Ministry of Civil Defence Emergency Management (MCDEM) has formed a National Public Education Reference Group with the task of developing a National strategy and building on the mass media programme of "Get Ready, Get Thru". Alignment of a National Strategy to a Group Strategy is imperative to the success of promoting a change in

behaviour of our communities by moving people along the path from awareness, to understanding, to commitment and to a state of preparedness.

MCDEM have made a commitment to improve communications within the sector with regard to public education, through Group representation on the National Reference Group which will meet at least three times a year.

1.5 Staff

Jessica Hare has been appointed as Emergency Management Officer after the resignation of Jo Guard. Jessica starts with the Council on 16 April 2007.

2. Environment

2.1 Earthquake Reports:

Since preparing the last report for the Environment Committee meeting 27 reports for earthquakes bigger than 3 on the Richter Scale were received from GNS. Only one earthquake was felt in the Wellington Region:

Mar 19 2007 **Magnitude:** 3.7 **Depth:** 15 km *10 km north-west of Carterton*

2.2 Special Weather Bulletins

One weather event (14-18 March) occurred since the last meeting during which we have received thirteen Special Weather Bulletins (eight for heavy rain, and five for strong wind). All the relevant agencies were notified in time. No serious issues have been experienced.

2.3 Communications

Weekly tests of the radio communications network are being carried out. The satellite network is being tested on a monthly basis.

Both systems are well maintained and regular checks are carried out on the battery and generator backup systems. The re-positioning of antennae is necessary after high winds.

We lost power to the Mt Climie repeater site from 15 to 19 March 2007 due to the weather event mentioned in 2.2 above. The backup system performed well in this instance.

Richard Waddy
Manager, Environmental Support

Financial Position: 28 February 2007

1. Operating Results

We are pleased to report the Division's operating results for the period ended 28 February 2007.

<u>Environment Division</u>					
<u>Summary Income Statement</u>					
<u>For the Period Ended 28 February 2007</u>					
	<u>Actual</u>	Year to Date		Full Year	
	<u>\$000s</u>	<u>Budget</u>	<u>Variance</u>	<u>Forecast</u>	<u>Budget</u>
		<u>\$000s</u>	<u>\$000s</u>	<u>\$000s</u>	<u>\$000s</u>
Rates	6,457	6,457	--	9,686	9,686
Other Revenue	1,348	1,353	5 U	2,300	2,033
Total Revenue	7,805	7,810	5 U	11,986	11,719
Less:					
Direct Expenditure	6,475	6,804	329 F	10,678	10,410
Indirect Expenditure	1,091	1,060	31 U	1,581	1,581
Total Operating Expenditure	7,566	7,864	298 F	12,259	11,991
Operating Surplus (Deficit)	239	(54)	293 F	(273)	(272)

2. Surplus

The Division's finances are satisfactory and the overall result is more than we anticipated in our budgets. For the period the operating surplus came in at \$239,000, compared to a budgeted deficit of \$54,000.

The result translates to a net favourable variance of \$293,000, comprising reduced revenue of \$5,000, and offset by lower than expected expenditure of \$298,000.

3. Revenue

Total Revenue at \$7,805,000 is slightly, some \$5,000, lower than our budget target of \$7,810,000.

- The notified consent applications for the Hilton Hotel, Western Wastewater Treatment Plant, Whitby Coastal Estates and the Wellington Marine Education Centre at Te Raekaihau have been completed.
- Resource management compliance charges have been processed for both offices. In total the charges amounted – Wellington \$263,000 (last year - \$267,000) and Wairarapa \$191,000 (last year - \$180,000).
- There are a number of notified consents in progress. In Wellington Staithes Drive Development have applied for a 100 lot residential subdivision at Whitby. Similarly, the Wairarapa has a number in hand; N & E Reid's application for the discharge of piggery effluent, Prema Investments a community wastewater, Stronvar Properties Ltd a residential subdivision at Masterton, and Palliser Bay Station a residential subdivision on the South Wairarapa Coast.

4. Total Expenditure

The Division's total expenditure at \$7,566,000 is some \$298,000 (or 3.8%) less than our budget.

The main reasons for this variance are:

- Personnel costs were under budget by \$287,000. Staff movements during the period are the main cause of the underspend. As a consequence some of the saving is considered permanent.
- Internal charges were lower than budget by \$101,000

A new software package for the consent applications, monitoring, pollution response and biosecurity is being developed. However, we have not received any charges from our IT support team who are managing the project. Our share of the project these amounted to \$53,000 and for the six months ended 31 December 2006. From 1 January 2007, catch-up and regular charges have been raised.

Also there has been a reduced call for work for consent monitoring from the departments - Wairarapa Technical Services, Harbours and Resource Investigation. As these transactions are mainly within the Division (both revenue and spend) the overall effect is nil.

5. Capital Expenditure

At this stage, the capital expenditure programme (after asset disposals) is at a lower level than anticipated.

Most of the underspend is with the groundwater model project. This major capital item (\$200,000) is progressing. A report on the first stage of the project, a conceptual and numerical modelling of the Wairarapa groundwater basin has been completed. The recommendations of the report are being reviewed and if confirmed will lead to a minor change in focus for the project. Rather than a few deep bores, multiple shallow bores will be drilled along with investigating groundwater-surface water interaction. The computer modelling component is continuing.

The Beacon Hill communication facility upgrade (\$200,000) and equipment for the Safety Management Systems (\$400,000), is progressing. We are exploring options to proceed.