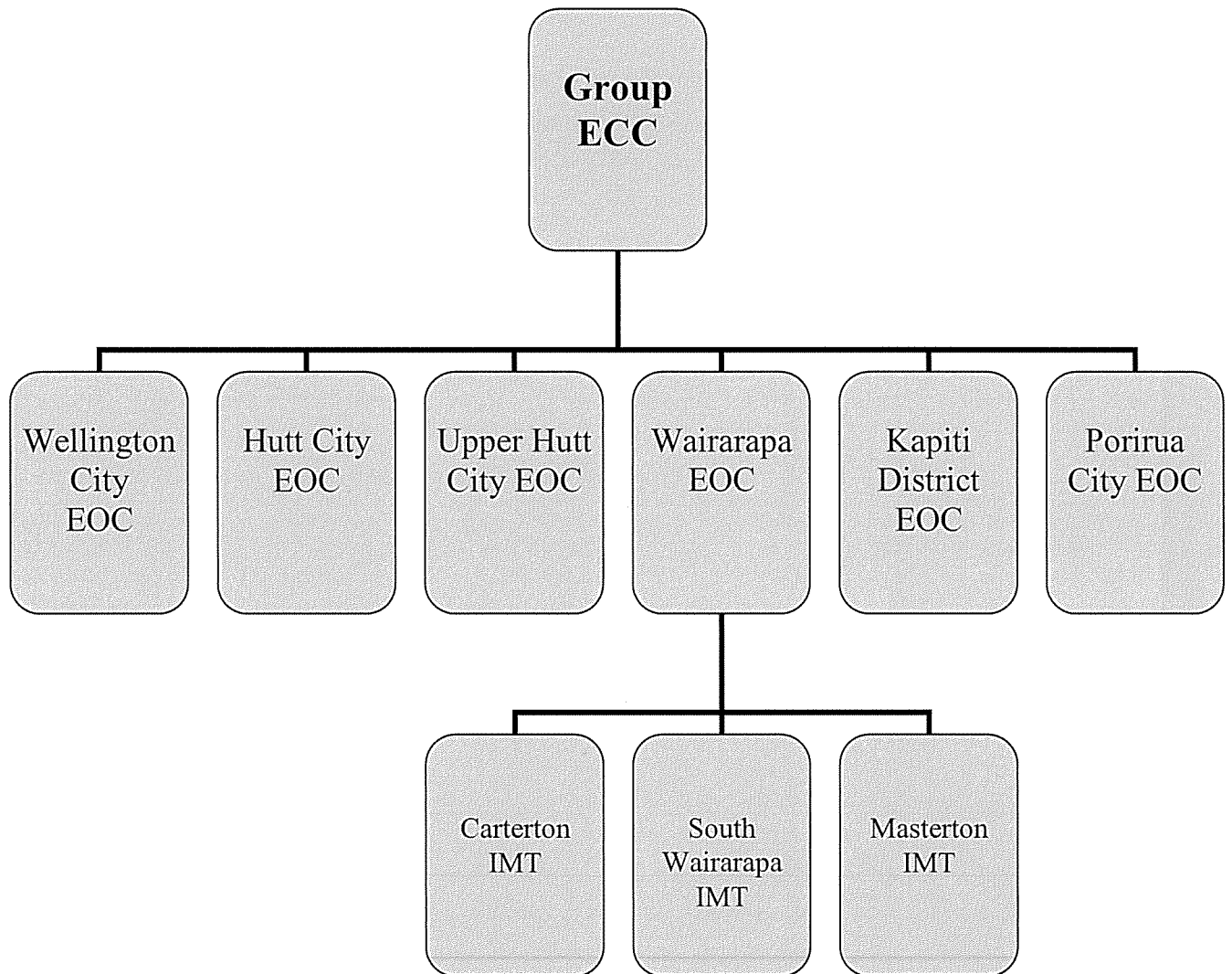


Organisational Structure during an Emergency



EOCs/ECC manned by council staff as directed with CDEM team support provided by assigned personnel (2 to 3 per centre – in either the Controller or EOC Manager roles)

In the event all EOCs are not required to be manned (where the emergency is localised), additional support may be provided by reassigning remaining staff not required

The EOC remains a council facility albeit managed by the CDEM Area Coordinator