

---

# Whitireia Park Board

Friday 6 May 2022, 9.30am

Titahi Golf Club, Gloaming Hill, Titahi Bay, Porirua

---

## Members

Jenny Brash

Chris Kirk-Burnnand

Prue Lamason

Jenny Ngarimu (Chair)

Caleb Ware

Sharli-Jo Solomon

# Whitireia Park Board

---

Friday 6 May 2022, 9.30am

Titahi Golf Club, Gloaming Hill, Titahi Bay, Porirua

## Public Business

<b>No.</b>	<b>Item</b>	<b>Page</b>
1.	Apologies	
2.	Conflict of interest declarations	
3.	Public participation	
4.	Confirmation of the public minutes of the Whitireia Park Board meeting on 3 December 2021	3
5.	Board Accounts	6
6.	Work Programme Update	10
7.	Restoration Group Update	29

**4**



**Please note that the full minutes remain unconfirmed until the Board Meeting on 6 May 2022**

SUBJECT            **Whitireia Park Board Minutes**

WHEN              Friday 3 December 2021 at 9:30 am

WHERE             Titahi Golf Club, Gloaming Hill, Titahi Bay, Porirua

**Present**

Jenny Ngarimu (Chair)	Sharli-Jo Solomon	Prue Lamason
Chris Kirk-Burnnand	Jenny Brash	Caleb Ware

Jenny Ngarimu welcomed everyone to the meeting and in response to her invitation, Sharli-Jo Solomon opened the meeting with a Karakia.

---

**1 Apologies**

There were no apologies.

**2 Conflict of interest declarations**

There were no declarations of conflict of interest.

**3 Public participation**

There was no public participation.

**4 Confirmation of the minutes of 9 March 2021**

*Moved* (Prue Lamason/Chris Kirk-Burnnand)

*That the Board confirms the minutes of the meeting of 13 August 2021.*

The motion was **CARRIED**.

5 **Draft Financial Accounts** [For Information]

Marilyn Walker, Democratic Services Advisor, Greater Wellington spoke to the report on behalf of Darryl Joyce, Accounting Services Manager, Greater Wellington Regional Council (Greater Wellington) and advised that access to the Board's bank account with BNZ has now been resolved and that a set of accounts will be provided at the next Board meeting on 25 February 2022.

6 **Work Programme update** [For Decision]

Gary Wheaton, Park Ranger and Kim Broad, Biodiversity Advisor, Greater Wellington, spoke to the report.

In addition to the incident outlined in the report the issue of motor bikes and in particular dirt bikes was further discussed and is identified as a continuing issue for the safety of all users of the park. Communication channels advising the public regarding this issue will be investigated and reported back to the next Board meeting on 25 February 2022.

Discussions have commenced and key issues for consideration have been identified regarding a review of the Whitireia Park Management Plan 2016. It was confirmed that it is proposed Greater Wellington in consultation with Ashleigh Sagar, the nominated representative from Ngāti Toa, that a report be presented at the next Board meeting on 25 February 2022.

*Moved*

*(Jenny Brash/Prue Lamason)*

*That (as amended) the Board:*

1. **Receives** the report.
2. **Approves** the content.
3. **Approves** that the activities detailed in the Applications summarised in Attachment 3, Whitireia Park Permissions, may proceed.

The motion was **CARRIED**.

**NOTED:** Ashleigh Sagar, representing Ngāti Toa has been requested by the Board to liaise with Greater Wellington staff and Restoration Group representatives and a member of the public who has indicated he would like to undertake some plantings in the valley situated to the left of Transmitter Street, past the Thornley Street entrance gate. It was understood by the Board that Ngāti Toa have consulted a landscaper regarding plantings in the Whitireia Park and that further consideration in terms of future plantings should be reviewed by all participating parties before the Board considers approving plantings by a member of the public.

## 7 Restoration Group – November 2021 [For Decision]

Robyn Smith, a coordinator from the Whitireia Park Board Restoration Group spoke to the report.

During discussion, Sharli-Jo Solomon advised she will find someone else to help with planting.

Mowing and the purpose of mowing to prevent fires was discussed. Gary Wheaton confirmed that no fertilising of mowing areas is carried out and that allowing hay making does not incur any costs. If hay making is discontinued then money would need to be found to carry out mowing. Gary will speak to the contractor and mowing areas will be reviewed.

It was confirmed that 4 wheel drive access to prevent the small area of fence-line by the RNZ building referred to on Page 30 of the Attachment to the Restoration Group Report, has been completed.

*Moved*

*(Jenny Brash/Sharli-Jo Solomon)*

*That (as amended) the Board:*

- 1 **Receives** the report.*
- 2 **Approves** funding of \$425.00 plus GST for Robyn Smith to obtain a GrowSafe certificate.*
- 3 **Approves** that mowing within Whitireia Park be further considered in consultation with Iwi, Whitireia Restoration Group, Greater Wellington Parks Staff and the Board.*

The motion was **CARRIED**.

**NOTED:** That concessions for Park Permissions provide for all dogs to be on leads and to stay on walking tracks. Media release of this requirement to be initiated.

## 8 General Business

Titahi Beach will be closed to vehicles from the end of January except for the purpose of launching boats. There will therefore likely be an increase in traffic through Whitireia Park once the beach area is no longer accessible to vehicles.

Jenny Ngarimu thanked everyone for their attendance and contribution and in response to her invitation, Caleb Ware closed the meeting with a Karakia.

The meeting closed at 10:20 am.

Jenny Ngarimu  
Chair, Whitireia Park Board

Date:





SUBJECT: Report for Whitireia Park Board meeting  
AUTHOR: Tanesha Patel, Senior Business Accountant  
DATE OF MEETING: 6 May 2022  
SUBJECT: **Whitireia Park Board Accounts**

---

**1. Purpose**

To present to the Whitireia Park Board (the Board) the management accounts for the period 1 July 2021 to 31 March 2022.

**2. Income**

Income has been received from 1 July 2021 to 31 March 2022:

- \$4,743.75 from Titahi Bay Golf Club for lease of the land
- \$31.11 Gross Interest received on the current bank balance of \$63,468.45.

**3. Costs**

Total costs for the 9 months from 1 July 2021 to 31 March 2022 were:

- \$1,237.50 for reimbursement to Greater Wellington Regional Council (Greater Wellington) which was paid on behalf of the Board, being 12 months of GST for the period 1 July 2020 to 30 June 2021
- \$40.00 for the Auditor Annual Confirmation Report
- \$488.75 for the Growsafe standard training.
- \$555 for the GST payment for the period ended 31 January 2022.

**4. Bank Account**

The BNZ Bank account balance as at 31 March 2022 is \$63,468.45.

**5. Recommendation**

*That the Board:*

1. **Receives** the report.
2. **Approves** the content.

Report prepared by:

**Tanesha Patel**  
Senior Business Accountant

Report approved by:

**Jimmy Young**  
Manager, Parks



**Whitireia Park Board**  
**Statement Comprehensive Revenue and Expense**  
**for the period 1 July 2021 to 31 March 2022**

	2020/21 Full Year	2021/22 YTD	GW Entries 2020/21 Full Year	GW Entries 2021/22 YTD
<b>Income</b>	<b>\$</b>	<b>\$</b>	<b>\$</b>	<b>\$</b>
Water Rates	-	-	9,780	26
Park Concessions	-	-	183	261
Park Camping				-
Lease	5,500	4,125	-	-
Interest	30	31	-	-
GWRC	-	-	127,839	49,807
<b>Total Income</b>	<b>5,530</b>	<b>4,156</b>	<b>137,802</b>	<b>50,094</b>
<b>Less Expenditure</b>	<b>\$</b>	<b>\$</b>	<b>\$</b>	<b>\$</b>
Sundry	40	40	-	-
Depreciation	1,676	1,257	-	-
Project Materials - 23000	-	-	15,684	11,072
Staff Training - 22400	-	425	-	-
Chemicals (General) - 23020	-	-	-	-
Printing - 23300	-	-	774	410
Photocopying - 23315	-	-	-	-
Postage & Couriers - 23325	-	-	-	-
Councillors' Fees - 23700	-	-	-	-
Rates - 23505	-	-	5,425	4,480
Security - 23515	-	-	772	-
Cleaning & Toiletries - 23520	-	-	-	1,363
Refreshments Staff - 23400	-	-	-	35
Meeting - Non-Council - 23755	-	-	174	-
Repairs & Maintenance - 23600	-	-	11,265	4,059
Repairs & Maint Equip - 23605	-	-	-	-
Repairs & Maint Plum - 23610	-	-	-	1,124
Repairs & Maint Pain	-	-	-	-
Loose Tools & Minor Equipment - 23650	-	-	(75)	-
Leased Plant & Equip - 23655	-	-	-	-
Venue Hire - 23415	-	-	-	-
Equipment Hire - 23415	-	-	-	-
Advertising - 25230	-	-	748	115
Permits & Licence Fe - 23200	-	-	-	-
Settlement-Materials & Supplies	-	-	-	-

Contract Labour - 25000	-	-	14,488	14,467
Contractors - Machine - 25005	-	-	-	-
Contractors - Construction - 25010	-	-	-	-
Contractors – Facilities	-	-	-	-
Consultants - Extnl Audit Fees - 25205	-	-	-	-
GWRC Vehicle Costs - 24500			934	-
GWRC Staff Time - 32500	-	-	87,613	12,968
IC Wairarapa Biosec	-	-	-	-
<b>Total Expenditure</b>	<b>1,716</b>	<b>1,722</b>	<b>137,802</b>	<b>50,094</b>
<b>Net Surplus / (Deficit)</b>	<b>3,814</b>	<b>2,434</b>	<b>-</b>	<b>-</b>

*Note – A correction has been made to the FY 2022 YTD expenses.*

**Whitireia Park Board**  
**Balance Sheet as at 31 March 2022**

	30 Jun 2021	GW Entries 2021/22 YTD
<b>FUNDS AND RESERVES</b>		
Accumulated Funds	65,710	69,525
Net Surplus (Deficit)	3,815	2,434
<b>TOTAL FUNDS AND RESERVES</b>	<b>69,525</b>	<b>71,959</b>
Represented By:		
<b>CURRENT ASSETS</b>		
Current Account	61,015	63,468
Sundry Debtors	82	82
GST Receivable	-	-
<b>Total Current Assets</b>	<b>61,097</b>	<b>63,551</b>
Fixed Assets	285,806	285,806
Accumulated Depreciation	(276,503)	(277,761)
<b>Total Fixed Assets</b>	<b>9,303</b>	<b>8,044</b>
<b>Total Assets</b>	<b>70,400</b>	<b>71,594</b>
<b>CURRENT LIABILITES</b>		
GST Payable	834	(404)
Sundry Creditors	40	40
<b>Total Current Liabilities</b>	<b>874</b>	<b>(364)</b>
<b>Total Liabilities</b>	<b>874</b>	<b>(364)</b>
<b>NET ASSETS</b>	<b>69,526</b>	<b>71,958</b>



SUBJECT: Report for Whitireia Park Board meeting

AUTHOR: Gary Wheaton, Whitireia Ranger; Kim Broad, Senior Biodiversity Advisor;  
Fiona Colquhoun, Strategic Planning

DATE OF MEETING: 6 May 2022

SUBJECT: **Work Programme update**

---

## 1. Purpose

To provide the Whitireia Park Board (the Board) with an update on the work programme at Whitireia Park.

## 2. Background

A programme of work for the 2021/22 financial year was approved by the Board at its meeting on 13 August 2021.

## 3. Whitireia Park Management Plan

A preliminary review of Management Plan actions with commentary from the Whitireia Restoration Group and Greater Wellington officers was provided in the February Board report (**Refer to Attachment 1**). A Park Board discussion was proposed on Section 3. 'Issues and Opportunities', however the meeting was cancelled. For reference, Issues and Opportunities were identified as:

### *'MANAGEMENT PLAN REVIEW/ DESIGN APPROACH*

- *Create new or update current management plan after decisions are made about the future of the Radio NZ land no longer required for their purposes?*
- *Future review of plan/ new management led by Ngati Toa?*
- *Simplification of the Plan – remove ongoing routine work?*
- *When reviewing the plan in future, consider policy alignment with Greater Wellington's Toitū Te Whenua Parks Network Plan 2020-30?*
- *When reviewing the plan, simplify Bylaws to allow more onsite rule flexibility e.g. dogs approach of Greater Wellington's Toitū Te Whenua Parks Network Plan where dog on/ off leash areas not defined in plan but left to park operations.*
- *Promote the plan - advocacy of the Park's vision, policies and objectives on any future planning documents – regional or district.*

## RECREATION

- *People keeping their dog on lead at Onehunga Bay – it's a Bylaw.*
- *Add nesting penguin/ other bird areas to Bylaws.*
- *Consider revising Bylaws to remove detail and make more general as per Greater Wellington's Toitū Te Whenua Parks Network Plan – to allow rule adaption to changing park circumstances.*
- *Motor bike activity/ policing.*
- *Widening access road/ adapting access once possible changes for Radio NZ land is known.*
- *Onepoto Road (Porirua City Council paper road) formal resolution.*
- *Prevention of off road 4Wheel-Drive activity.*
- *Track maintenance and tracks lost to gorse.*
- *Ranger hours and peak activity times.*
- *Boat launching on coast north of Onehunga Bay.*
- *Carparking restrictions.*

## RESTORATION:

- *Gorse – look at zones where it would be desirable to keep gorse at bay for restoration and fire risk reduction purposes.*
- *Other weeds (e.g. cotoneaster, bone seed, karo, Spanish heath, liquorice plant, pampas, climbing asparagus). Liquorice plant and pampas are the biggies that will transform the nature of the park if not controlled.*
- *Plantings and maintenance.*
- *Reduce mowing to allow native shrub regeneration to occur – needs zoning.*
- *Trapping network review.*
- *Mowing extent in the park.*
- *Unapproved spraying and planting.*
- *Golf club and adherence to park plan regarding planting and earthworks.*
- *Significant Natural Areas in Porirua City Council's Proposed District Plan.*
- *Social license to continue aerial spraying.*

## CULTURAL HERITAGE & LANDCAPE

- *Signage about ecologically sensitive areas such as Onepoto Estuary and penguin nesting areas - educative and directive.*
- *Heritage storytelling.*
- *Archaeological site conservation plan?*

No action is sought; however the Park Board may wish to discuss some of these issues or opportunities.

#### 4. Park management

It continues to be very busy at Whitireia. With summer drawing into autumn, we have had some fantastic weather on the weekends which has kept the park very busy.

Behaviour has been good in general however we are still getting a degree of tagging and vandalism in the toilets (Refer to photo below). There has been quite a bit of tagging in the carpark at the Pou including swastikas painted on the road surface. This has been very difficult to remove and in fact they have had to be painted out so they don't look like swastikas. I'm trying to find a good way of removing the graffiti.



Regular patrols continue to be undertaken at random times by Park Rangers and the security firm for the park. The security guards report that they have had an increased number of lock-ins over this period, some in the very early hours of the morning but mainly as the closing times change to meet dusk. Although this is expected, an extra notice has been installed at the gate to highlight the change of closing time.

Dogs off leads in Onehunga Bay is still an issue. This is especially so when people are getting out of their car and heading straight to the beach. There is no authority to enforce this from the inland track through to the coastal track. Consideration could be given to revisiting the by-law in conjunction with the management plan, including the reason for it and whether it is needed. Dog behavioural problems have been few and far between and the by-law is, and always has been incredibly hard to police due to the reasons outlined above. Interaction regarding this issue has resulted in several instances of tension between staff and park users.

On 16 February 2022 a near miss incident involving the park ranger was documented through Greater Wellington's incident management system. There has been an increase in aggressive behaviour towards officers who maintain extra vigilance when on site. A copy of the documented incident is detailed below:

*“Title Cornered by angry drunk guy @ Whitireia*

*Detail - (Park Ranger) was around at Kaitawa point gate replacing the vandalised ‘road closed sign’ when I was cornered by a chap (a big chap) in full red clothing who was obviously under the influence of something. He came right up to me and started yelling that I had stolen his net and wanted to know where it was. I had not seen him approaching and was stuck between my truck and the gate.*

*Initial Actions - I explained that I was the Park Ranger and had nothing to do with the water. I said I was sorry to hear about his net and let him know that as I understand it, nets are forbidden right along the west coast. We spoke for a bit and I calmed him down and then turned the conversation around to little blue penguins of all things. About 3min in his mate noticed he was up with me and came and got him, apologized and took him back to the car. I must admit I was a bit shaken but calmed down pretty quick. They decided to leave about 5 minutes later so I didn't bother reporting it to police.”*

In February 2022, Radio NZ (RNZ) had cleaned out their old concrete drains on Shelly Street which has led to a big increase in rubbish dumping along there. It is understood RNZ are planning to put some sort of grate or wooden structure over the drains to stop the dumping. They are also looking at closing the road where RNZ’s land starts and Porirua City Council’s controlled road reserve ends, which is halfway up Shelly Street. Greater Wellington is donating a pipe gate and RNZ will pay to have it installed. The reason for this is that people intending to dump rubbish are much less likely to come past the gate and also because it is closer to the neighbours’ houses.

Motorbike activity seems to have slowed a bit; however dirt bikes have been seen a couple of times on the road by Rangers and by Robyn Smith. Police had a ‘sting’ throughout the whole Porirua basin and quite a few riders were caught, but some continue to persist. Members of the public are encouraged to call Police on \*555 if they see motorbikes in the park.

Ongoing maintenance continues, including track trimming of vegetation, cleaning drains and culverts and some track edge spraying. Mowing of amenity sites and road edges has continued.

The Parks Department is looking into the mowing situations across all parks in the network to better understand what is required and how to better resource them. This may result in mowing being contracted out.

A decision has also been made that the tops will no longer be cut for hay. The timing for cutting does not coincide with the need to cut for fire mitigation and the quality of the grass is not good for feed. Going forward they will be mowed once or twice a year with the same



area that was done this year, but the terraces will be excluded. The smaller area will still offer enough fire protection if a fire comes up from the bottom of the escarpment.

Approval is sought to move the diving clubs and others that use Kaitawa Point from the current licence system to a 'special access permit' on an online platform. This approval is sought because of the amount of administration resource that is involved in requesting returns, renewing licences and processing invoices and payments, for what is a very small return. The 'special access permit' will have all the current conditions, apart from requiring the applicant to pay Greater Wellington returns. The whole process will be able to be completed online. The benefit gained of the proposed process is that it will significantly reduce resource costs.

The Thornley Street gate was taken down on the 12 April 2022 and was refitted out at Battle Hill. The replacement gate for Thornley St is a while off yet due to the difficulty in getting some of the components from overseas. In the meantime, contractors have put up a temporary gate until such time as the replacement gate can be installed.

The closing times for the gates has been simplified to 6pm (winter hours) and 9pm (summer hours). Previously, the closing times were staggered accordingly to the onset of dusk and were progressively adjusted from 9pm, 8pm, 7pm and 6pm from summer through to winter.

A local lady, Lyn Erika, has approached us regarding paying for the installation of a bench seat or picnic table up on the top of the escarpment with views out to sea. Her preferred spot was the mown area that people use for weddings, but she has been advised this location would not be an option. She is happy if it goes anywhere along there. Greater Wellington officers consider that there are sufficient seats already in the park. Discussion is required about this.

Council officers are working on the toilet replacement project, including estimated costs and sites for Park Board consideration. Several options are being investigated and the Board will be advised once investigations are complete, and more information is available. Capital funding from several sources should be considered because the costs are beyond the current available Park Board funds.

Kim Broad and Gary Wheaton met with Ash regarding Joel de Boer's proposed revegetation work along the Thornley Street gully. Ash was happy from Ngāti Toa's perspective for him to go ahead as it would help tidy up that area and align with the mahi that both Luke and the restoration group are doing so. Greater Wellington officers suggest this will be beneficial work.

### **3.1 Concession applications**

Concessions are up-to-date.

## **5. Key Native Ecosystem site management**

### **5.1 Pest animal control**

Pest animal control across the park is ongoing with volunteers undertaking most of the trap and bait station servicing work. The bait stations installed in bush in the Gloaming Hill - Te Onepoto area early in the year are being continually emptied by pests, presumably rats and mice, and possibly possums. The value of having the trap and bait stations is therefore clearly evident and the volunteers are commended for their enthusiasm and mahi in adding this area of control to their already busy mahi.

### **5.2 Weed control**

This year's planned weed control actions aimed at protecting the KNE site have mostly been completed. A second day of aerial spraying on the coastal escarpment is due to be done as soon as weather conditions and staff and contractor availability align.

Recently completed work includes the control of:

- Boneseed, boxthorn, karo, wattle, agapanthus, and other weeds along the top of the coastal escarpment.
- Old man's beard and licorice plant on the slopes above Thornley Street.
- Blackberry on the edges of Te Onepoto estuary.
- Japanese honeysuckle in Te Onepoto valley (see photo below).



Follow-up spraying amongst dead Japanese honeysuckle and gorse from last year's control.

### **5.3 Restoration planting**

This year's large planting site in the saddle between the Onehunga and Onepoto stream catchments has been prepared by controlling patches of gorse in the site and spraying 1,000 planting spots. Preparational spraying has also been done in two small coastal planting sites.

## 6. Recommendations

*That the Board:*

1. **Receives** the report and notes the contents.
2. **Approves** the proposed programme of work for the 2022/23 financial year.
3. **Approves** the requirement for diving clubs and others who use Kaitawa Point gate to obtain a 'special access permit' via the GW online platform.
4. **Approves** the proposal for Joel de Boer to do volunteer restoration along the Thornley Street gully as proposed in liaison with the Park Ranger.

Report prepared by:

**Name**  
Title

Report prepared by:

**Kim Broad**  
Kaituhutuhu Matua / Senior Biodiversity  
Advisor

**Jeremy Paterson**  
Principle Ranger Western Parks

**Fiona Colquhoun**  
Strategic Planner Parks

Report approved by:

**Name**  
Title

**Jimmy Young**  
Manager, Parks



## Attachment 1 to Work Programme Update: Whitireia Park Management Plan Preliminary Desktop Review 2021/22 Issues and Opportunities

### 1. Introduction

The Whitireia Park Management Plan was made under the Reserves Act and approved by the Park Board in 2016. The Reserves Act requires that management plans are kept current. This list of Plan actions was presented for discussion to the Whitireia Park Board at its meeting on 3 December 2021.

### 2. Background - Reserves Act

The Reserves Act requires that management plans are kept current:

#### Section 41

(3) The management plan shall provide for and ensure the use, enjoyment, maintenance, protection, and preservation, as the case may require, and, to the extent that the administering body's resources permit, the development, as appropriate, of the reserve for the purposes for which it is classified, and shall incorporate and ensure compliance with the principles set out in section 17, section 18, section 19, section 20, section 21, section 22, or section 23, as the case may be, for a reserve of that classification.

(4) 'The administering body of any reserve shall **keep its management plan under continuous review**, so that, subject to subsection (3), the plan is **adapted to changing circumstances or in accordance with increased knowledge**; and the Minister may from time to time require the administering body to review its management plan, whether or not the plan requires the approval of the Minister under this section'.

#### Process:

The review process involves public notice, invitation to comment, opportunity to be heard in support or opposition, preparation of new or revised plan, consultation on the draft, Park Board approval, then submission to Minister of Conservation for approval.

It is possible to make minor changes without public consultation (as per sub-section 5 (A) '...where the administering body has, by resolution, determined that written suggestions on the proposed plan would not materially assist in its preparation'.

### 3. Summary of issues and opportunities (preliminary) – add to these in discussion

#### Plan Moemoeā / Vision

*Three strands to the moemoeā are based on Whitireia Park being an ANCHOR for our community, a place to DISCOVER and BELONG to:*

- 1. Increase environmental resilience by restoring and linking ecosystems and managing open space (ANCHOR)*
- 2. Encourage and promote park visits, make welcoming places to play, celebrate, contemplate and recreate (DISCOVER).*
- 3. Build connections between people and the land, cultural and natural heritage features and events (BELONG)*

#### Management Plan review/ design approach

- Create new or update current management plan **after** decisions are made about the future of the Radio NZ land no longer required for their purposes?
- Future review of plan/ new management led by Ngati Toa?
- Simplification of the Plan – remove ongoing routine work?
- When reviewing the plan, consider policy alignment with Greater Wellington’s Toitu Te Whenua Parks Network Plan 2020-30?
- When reviewing the plan, simplify Bylaws to allow more onsite rule flexibility e.g. dogs approach of Greater Wellington’s Toitu Te Whenua Parks Network Plan where dog on/ off leash areas not defined in plan but left to park operations.
- Promote the plan - advocacy of the Park’s vision, policies and objectives on any future planning documents – regional or district

#### Park issues / opportunities to be addressed

##### RECREATION

- People keeping their dog on lead at Onehunga Bay – it’s a Bylaw
- Add nesting penguin/ other bird areas to Bylaws
- Consider revising Bylaws to remove detail and make more general as per Greater Wellington’s Toitū Te Whenua Parks Network Plan – to allow rule adaption to changing park circumstances
- Motor bike activity/ policing
- Widening access road/ adapting access once possible changes for Radio NZ land is known
- Onepoto Road (PCC paper rd) formal resolution
- Prevention of off road 4WD activity
- Track maintenance and tracks lost to gorse
- Ranger hours and peak activity times

- Boat launching on coast north of Onehunga Bay
- Carparking restrictions

## RESTORATION:

- Gorse – look at zones where it would be desirable to keep gorse at bay for restoration and fire risk reduction purposes
- Other weeds (e.g. cotoneaster, bone seed, **karo**, **Spanish heath**, **liquorice plant**, **pampas**, **climbing asparagus**). Liquorice plant and pampas are the biggies that will transform the nature of the park if allowed
- Plantings **and maintenance**
- Reduce mowing to allow native shrub regeneration to occur – needs zoning
- Trapping network review
- Mowing extent in the park
- Unapproved spraying and planting
- Golf club and adherence to park plan regarding planting and earthworks
- Significant Natural Areas in PCC's Proposed District Plan
- Social license to continue aerial spraying

## CULTRUAL HERITAGE &amp; LANDCAPE

- Signage about ecologically sensitive areas such as Onepoto Estuary and penguin nesting areas - educative and directive
- Heritage storytelling
- Archaeological site conservation plan?

## 4. Current Plan actions (identify highest priorities for next 1-2 years?)

OBJECTIVE		ACTION	COMMENTARY / DISCUSSION
1. An improvement of native habitats through regeneration, active restoration and building green connections	1	a) Continue restoration of vegetation on coastal dunes and terraces	<ul style="list-style-type: none"> <li>• Limited areas between Kaiua Bay and Onehunga Bay for dune restoration</li> <li>• All areas between the coastal track and the sea planted within 10 years to buffer the coastal edge from storm events. RS</li> <li>• Need to continue. KB</li> </ul>
	2	b) Use buffer and node plantings to enhance remnant forest and provide seed source.	<ul style="list-style-type: none"> <li>• Planting between forest remnant and track behind Onehunga Bay. RS</li> </ul>



OBJECTIVE		ACTION	COMMENTARY / DISCUSSION
			<ul style="list-style-type: none"> <li>• Need to continue. KB</li> </ul>
	3	c) Provide and monitor penguin nesting boxes.	<ul style="list-style-type: none"> <li>• West of Kaitawa Point. RS</li> <li>• Good to initiate. KB</li> </ul>
	4	d) Monitoring of birds and lizards.	<ul style="list-style-type: none"> <li>• Specific wetland bird surveys in Onepoto stream valley and Onehunga Bay wetland.RS</li> <li>• Good to initiate. KB</li> </ul>
	5	e) Protect and enhance habitat for rare, threatened and endangered species (including Leptinella Nana (Nationally Critical Status) throughout the park	<ul style="list-style-type: none"> <li>• Gradual extension of habitat for Leptinella nana</li> <li>• Small scale reintroduction of missing indigenous species. RS</li> <li>• Need to continue Robyn's great work on LepNan. Good to initiate reintroductions of other spp.KB</li> </ul>
	6	f) Protect escarpment communities and threatened plants through the Key Native Ecosystem programme and with fencing if such protection is necessary and practicable	<ul style="list-style-type: none"> <li>• Need to continue. KB</li> </ul>
	7	g) <b>Continue</b> restoration planting <b>connecting</b> Onehunga Bay Forest remnant and Onepoto Strea	
	8	h) Restore riparian vegetation sequences from terrestrial to freshwater to estuarine environments for Te Onepoto Stream and other waterways draining to the harbour.	
	9	i) Assist natural regeneration in gullies by introducing seed sources and suppressing rank grass <b>and woody weeds.</b>	
	10	j) Establish ongoing outcome monitoring and indicative timeframes for restoration activities	
	11	k) Reintroduce species from Mana Island back to Whitireia Park when conditions can be controlled to provide a high chance of their re-establishment.	Which species?
<b>2. Pest plants and animals are reduced to result in measurable ecosystem improvements</b>	12	a. Continue existing plant pest and animal pest control programmes in accordance with the Greater Wellington Regional Pest Management Strategy 2002-2022 and the Whitireia Coast Key Native Ecosystem plan 2014-2017. These plans are available on the GWRC website and from GWRC offices.	<ul style="list-style-type: none"> <li>• Relevant KNE plan is ,2019-2024, however this is also out of date in some areas.</li> <li>• -Birds present in the park is missing, Matata,Korimako and Karearea.</li> <li>• -Stakeholders now includes Capital Kiwi, as they consider the park as the Northern Boundry of thier control area.Trapping has been upgraded to support thier objectives.</li> </ul>



OBJECTIVE		ACTION	COMMENTARY / DISCUSSION
			<ul style="list-style-type: none"> <li>• -The trap network in the Onehunga Bay Bush remnant has been reactivated. Also the traps on the adjacent grasslands, a number of these traps were destroyed when the contractor mowed the grass to make hay.</li> <li>• -2 new trap lines have been added and further work is being undertaken to reduce rat numbers in the Onepoto Bay /Gloaming Hill area.</li> <li>• -The trapping map,P23 Appendix 1,Map 6 is out off date, the latest trapping network is on TrapNZ.</li> <li>• 2/17, Rabbits are not currently in the park, there is always risk of public release and self-introduction. RS</li> <li>• Agree that some information in the KNE operation plan is out of date. However, the operational activities have in general not changed. There is no intention to update the plan ahead of its expiry. KB</li> </ul>
	13	b. Progressively remove gorse and pampas from burnt areas and grasslands <b>and plantings</b>	Ongoing programme critical. KB
	14	c. Work with adjacent household owners to identify, eradicate and avoid new introduction of pest plants along the park boundary.	Good to initiate but big job. KB
	15	d. Remove ragwort, senecio glastifolius.	In high priority areas only. RS Good to explore this. KB
	16	e. Raise awareness of how to be a good neighbor of the park (eg, control of pets, reducing seaborne rubbish).	Most of the seaborne rubbish comes from Plimmerton with the prevailing wind. GW
	17	f. Consider additional targeted baiting or fumigation programme to complement existing rabbit controls.	Are there any rabbits remaining? RS Not required – continue current surveillance. KB

OBJECTIVE		ACTION	COMMENTARY / DISCUSSION
	18	g. Progressively remove pampas, boneseed, kikuyu grass and other pest plants on the eastern escarpment and slopes, <b>allow gorse to remain</b> as a nursery species for native plant regeneration	Critical for pampas (and licorice plant). Boneseed and kikuyu too hard without huge funding. KB
<b>3. Land management in the Onepoto catchment results in positive environmental contribution to the health of the Te Awarua-o-Porirua Harbour.</b>	19	a. Continue implementation of Porirua harbour collaborative project actions for Te Onepoto estuary and saltmarshes.	
	20	b. Survey opportunities for fish passage	Good to initiate – new fish passage programme might come to the party. KB
	21	c. Reinstate natural function of streams leading to Onehunga Bay and Onepoto Bay	Daylight Onepoto stream through golf club and plant stream margins. RS Good to initiate. KB
	22	d. Complete restoration planting of coastal wetland and dune area and assist establishment of these plants through weeding and rabbit control.	
	23	e. Work in conjunction with Porirua City Council to restrict vehicle access beyond the boat sheds on Onepoto Road entrance to the park	Done. GW However, the road beyond boatsheds is still a PCC legal road so PCC Bylaw or formal road closure process required. FC
	24	f. Encourage dog owners to pick up their dog's poo and maintain dog poo disposal units at carparks. Long term opportunities	Good to initiate. KB Done. GW
	25	g. Restore upper wetlands and riparian protection as a part of the potential golf course development subject to environmental impact assessment	Should be condition of development if it happens. KB
<b>4. Open space is managed for its recreation and amenity value, and to ensure preservation of archaeological sites. Management will give rise to in an increased appreciation of the area</b>	26	a. Obtain Radio New Zealand, Heritage New Zealand and Porirua City Council consents for any work involving ground disturbance	
	27	b. Mow tracks and picnic areas as required and practicable	
	28	c. Brief staff and contractors about the Accidental Discovery Protocol prior to any excavation work being carried out (in addition to the brief during the planning process).	Critical, for planning planting as well – need to get finalised process on this from Heritage NZ, I've been badgering Wayne for two years. KB
	29	d. Prepare a conservation strategy for the known archaeological sites at Whitireia Park.	
	30	e. Include a landscape and cultural impact assessment when investigating new tracks in the park.	
			<b>f. Reinstate tracks which have been lost to gorse on the eastern side of the park.</b> <b>1. Power line down to Kaiaua Bay</b> <b>2. Power line down to Te Kahikatoa</b>

OBJECTIVE		ACTION	COMMENTARY / DISCUSSION
			<ul style="list-style-type: none"> <li>The padded trail from the upper car park to Kaitawa Point is well used and could be widened.</li> <li>Signs on these trail heads would be helpful for the public and some updated maps. RS</li> <li>Agree. GW</li> </ul>
		<b>g. define and provide carparking in areas north of Onehunga Bay</b>	<ul style="list-style-type: none"> <li>Use bollards to protect the coastal edge. RS</li> <li>I don't believe more bollards anywhere in the park is the answer as it takes away the natural look and feel of the place which was something we as a collective wanted to preserve. GW</li> </ul>
<b>5. Risks from fire and other human induced/ influenced hazards to the park environment and visitors are reduced over time</b>	31	a. Strategic mowing of tracks and road sides, including the Thornley Street area where this will create a fire break between the park and housing.	
	32	b. Where practicable, making hay and baled silage to reduce fuel loadings	Limited defined areas in early summer. RS Need to continue, but mowing zones need identifying. KB We are only cutting this now and the zones have been identified. GW
	33	c. Firebreak planting of low flammability species (green fire break).	
	34	d. Information and education about fire risk through signage and other media/ communication channels	Signs have always been up and there is enough media comes at this time of year. GW
	35	e. Ongoing liaison with Rural Fire authority.	
	36	f. Maintain (on road) signage about road behaviour.	
	37	g. Continue to patrol and enforce against off road motorbikes / 4WD.	
	38	h. Restrictions of vehicle access to Kaitawa Point via a locked gate during high risk fire periods or for other management purposes. Improve the car parking/turning space before the gate.	
	39	i. Trialing methods to re-vegetate with native species.	Is this still current? RS. Yes. GW
40	j. Considering additional traffic calming measures to ensure speeds are kept low.	Especially along the road north of Onehunga Bay. RS	

OBJECTIVE		ACTION	COMMENTARY / DISCUSSION
	41	k. Better defining and identifying passing bays within the park road to improve traffic flow and perceptions of safety	The sides of the road and passing areas including wider grass berms are already mowed frequently. GW
<b>6. Radio New Zealand's broadcasting function is not inhibited and that new network facilities do not compromise the amenity and functioning of the park</b>	42	a. Avoid earth disturbance in areas where RNZ infrastructure are located, and require permission from Radio New Zealand before any activities that may disturb the earth are carried out.	
	43	b. Mow within the Radio NZ fenced areas to reduce fire risk	No longer done by GWRC. GW
<b>7. The community's awareness of the values within the park is improved and demonstrated through care of the environment and park assets.</b>	44	a. Provide brochures and website information produced by Greater Wellington Regional Council.	
	45	b. Maintain way finding signage and park information boards at Onehunga Bay and Te Onepoto entrances.	
	46	c. Provide opportunities for the public to be involved in restoration plantings and beach clean-up works to collect plastics, glass and other rubbish.	
	47	d. Continue to run Great Outdoor Summer Events in the park	
	48	e. Work with the Whitireia Park Restoration Group as per the Memorandum of Understanding.	
	49	f. Collaborate with the rock climbing groups to agree and implement means of improving understanding and care of the escarpment where climbing occurs.	
	50	g. Ensure that promotion of the park as a place to recreate is linked to Porirua City Council website	
	51	h. Work with Titahi Golf Club to develop educational environmental information for golf club users	
	52	i. Work with Whitireia Park Restoration Group to ensure common focus on key messages	
	53	j. Work with the Te Awarua-o-Porirua Harbour Strategy Coordinator to advertise and undertake regular beach clean ups	
	54	k. Develop interpretation and signage that helps to build understanding on what makes this place unique (history, environment, landscape, etc).	<ul style="list-style-type: none"> <li>• Onepoto estuary needs interpretation sign inform dog owners of risks to wildlife. RS</li> <li>• Again do we really want to litter the place up with signage that the problem people won't read or adhere to anyway and ruin the natural look of the place?? GW</li> </ul>
	55	l. Provide online resources for children/ schools regarding the environmental values within the park.	
		<b>Support Whitireia Park Restoration Group for a World wetlands day event annually</b>	

OBJECTIVE		ACTION	COMMENTARY / DISCUSSION
8. Recreation and leisure activities are supported by tracks and other facilities that are in keeping with the natural and cultural setting.	56	a. Follow Greater Wellington's accidental discovery protocol should any archaeological sites be disturbed in the course of work.	
	57	b. Maintain tracks to levels defined in NZ Standards: Tracks and Outdoor Structures, retaining existing natural character wherever possible.	
	58	c. Ongoing ranger patrol to reduce incidence of vandalism, graffiti and unauthorized off road activities by 4WD and motorbikes.	Remembering it's a three day a week service which doesn't just mean being on the actual park.GW
	59	d. Maintain toilet blocks provided at Onehunga and Onepoto (Porirua City Council).	
	60	e. Improve access along tracks by reducing obstructions, especially for cyclists and children's mountain buggies, particularly the coast track. Modify <b>existing</b> barriers to exclude motorbikes but not others wherever possible	Now there is a juggling act.GW
	61	f. Provide landscaping and improved carparking at Kaitawa Pou.	
	62	g. Develop picnic areas for Onehunga Bay that include planting and other measures to provide seating and shade (in consultation with current users of the area) and are also used by those with limited mobility.	The only fast growing tree that is tough enough to withstand the environment there we cant use. GW
	63	h. Provide an external tap at Onehunga for drinking water and rinsing off. i. Provide dog waste disposal units at Onehunga Bay carpark and Te Onepoto entrance gate.	
	64	j. Develop a trail upgrade priorities plan in liaison with stakeholders. Investigate the development of a track which provides an alternative route (to the road) from the cliff top car park to Onehunga Bay (traversing the edge of the golf course) and from Kaitawa Pou to Onehunga Bay.	
	65	k. Investigate trails (alternative to the road) between Kaitawa Pou and the Onehunga Bay carpark.	
	66	l. Investigate the development of a route that follows the eastern ridgeline (from the high point on the inland track to Te Onepoto Bay).	
	67	m. Create an anchor point for kite surfers take off at Onehunga Bay and signage / other kite surfing improvements	
	68	n. Improve existing well-utilised routes throughout the park where appropriate	
	69	o. Develop new trails to create better links, new opportunities, or to allow other trails to be closed for regeneration/erosion control.	
	70	p. Consider the addition of a take-off facility for hang gliders and paragliders on the cliff tops such as hard surface for safety and environmental protection.	
71	q. Provide bench seats with backs at new points and along trails		
72	r. Work with local rock climbing groups on safety improvements on the track to the crag		
73	s. Develop plans for improving park entrances.		
74	t. Investigate if/how the upper carpark / storage shed foundations area can be improved/repurposed eg. marked for ball games / interpretation.		

OBJECTIVE		ACTION	COMMENTARY / DISCUSSION
	75	u. Install orientation panel at the upper car / storage shed foundations.	
	76	v. Investigate how the gradient can be improved on steep section of the northern aspect of the inland track	
	77	w. Develop and implement a shared trail users' code.	
	78	x. Develop a whole park sign plan	
	79	y. Develop a whole park plan for interpretation/revealing the stories of the park	
	80	z. Investigate alternatives for providing trails from Onehunga Bay to Kaitawa Pou.	
	81	a.a. Provide a disabled toilet facility at one location within the park and consider a cold water shower	
<b>9. Kaitiakitanga starts with mana whenua and extends through all parts of the community</b>	82	a. Ensure all permits for take of natural materials have Ngāti Toa Rangatira approval.	
	83	b. Maintain the Kupe's anchor stone area	
	84	c. Kaitawa Pou development includes interpretation that will build understanding of the connection of Ngāti Toa Rangatira to the area	
	85	d. Review environmental monitoring framework and include both scientific and cultural indicators to gain a stronger understanding of overall health and vitality of the environment.	
	86	e. Develop a notice board for the promotion of Restoration Group and other conservation group activities in the park.	
	87	f. Recognise significant conservation efforts via appropriate media and methods.	
	88	g. Research traditional Māori names of features within the area and where appropriate indicate using signage and maps (as per Policy 52).	
	89	h. Reveal Māori history of the area through various mediums (eg, tours, events, web and written documents, interpretative panels, educational resources) and wherever possible using Ngāti Toa Rangatira iwi members as key communicators or guides	
	90	i. Research and record cultural practices undertaken by Ngāti Toa Rangatira in the area with the aim of revitalizing cultural practices and Ngāti Toa Rangatira tikanga	
<b>10. Best practice in park management is provided</b>	91	a. Board meets regularly (at least quarterly) in a public forum to hear public feedback and consider the ongoing management of the park.	
	92	b. Agree to an annual work programme and follow its progress.	
	93	c. Monitor visitor use of park through track counters.	
	94	d. Support moves towards environmental marine protection around the Whitireia coast.	
	95	e. Work with Porirua City Council to encourage regular animal control officer visits to the park (dogs)	
	96	f. Work with Porirua City Council (PCC) on finding a solution to the inappropriate use of Onepoto Road.	

OBJECTIVE		ACTION	COMMENTARY / DISCUSSION
	97	g. Work with PCC on increasing safety and developing appropriate signage for Richard Street entrance.	
	98	h. Develop an agreement with New Zealand Alpine club on the maintenance of fixed anchors and protection bolts.	
	99	i. Consider possible addition of adjacent open space land to Whitireia Park where appropriate	
	100	j. Develop a working group of interested parties for the restoration of the Onehunga catchment.	





## Whitireia Park Restoration Group report - April 2022

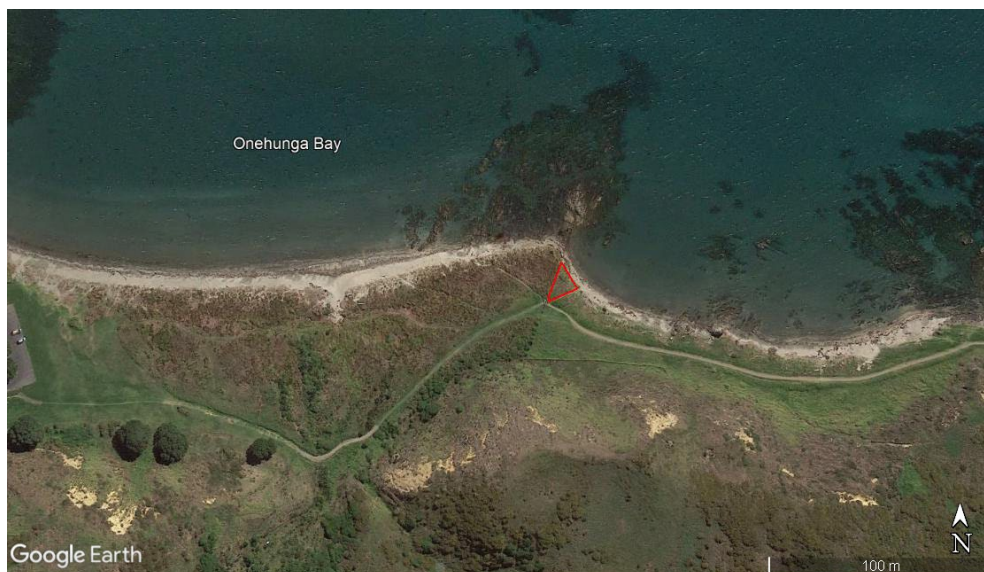
### Planting winter 2022:

Site preparation has only recently happened as it was too dry earlier so it will be June or July before we begin planting. It will depend on how much rain we get over the next month as it is still very dry in most places.

### Onehunga Bay

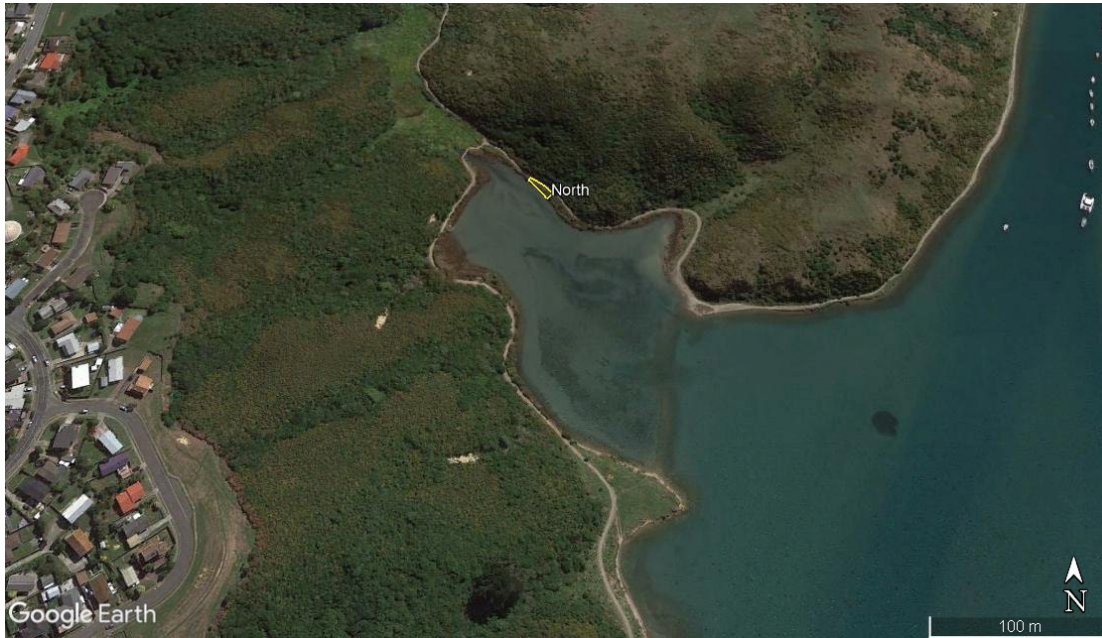
The biggest planting site this winter is behind Onehunga Bay on the saddle between Onehunga Bay valley and Onepoto stream valley.

A small dune east of Onehunga Bay will be available for school plantings. It is easily accessed from the carpark.



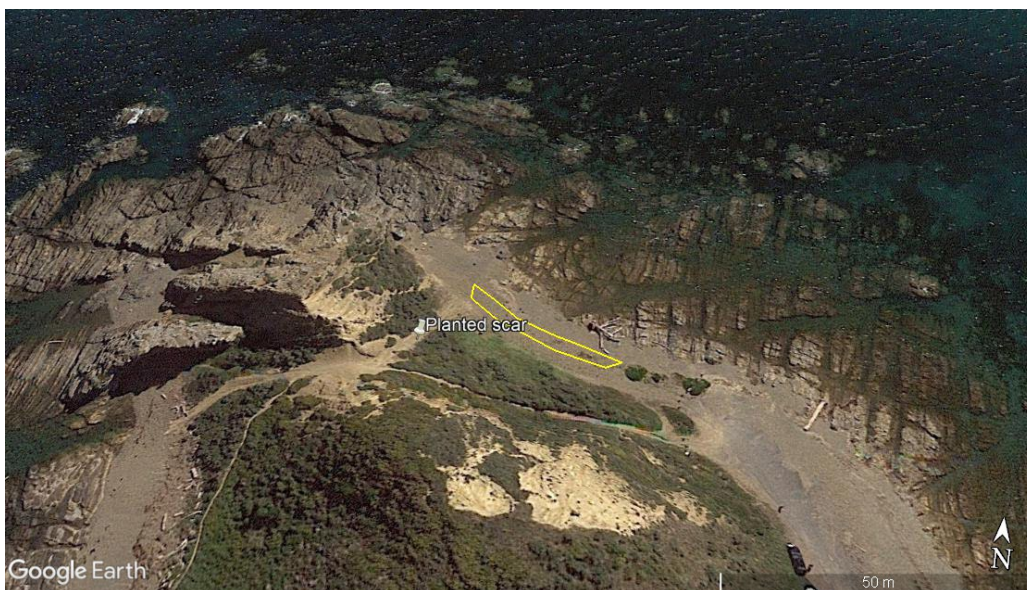
### Onepoto estuary

A further area of Onepoto estuary between the track and estuary will be planted with around 100 plants. We will also continue to infill gaps around the rest of the estuary. Last year's planting in the adjacent strip has been recently weeded.



### Kaitawa Point

Many of the plants at Kaitawa Point on the scar have been wrecked by people using the large driftwood as sunshades. The driftwood has been replaced twice this year to prevent trampling and motorbikes running over the plants. The plans on the coastal edge are doing very well and will be added to again this year.



***Leptinella nana* (Threat Status - Nationally Critical)**



The 2 *Leptinella nana* sites had mixed success this summer. We again have very dry weather during summer and autumn. Fortunately during summer we had two high rainfall events. During the first dry part of summer a large tauhinu which provided dappled shade for one of the 4 plant communities in site 1 died from drought and the *L. nana* shrivelled quite a bit in that spot before being discovered. Once discovered, Robyn watered all sites 3 times in dry periods between the two high rainfall events and covered the open area with a dead tauhinu branch. This helped the plant to recover. Additional mānuka will again be added to edges of site 1 this year to extend the shading and allow the *Leptinella* to spread a bit further. In site 2 it is more shady and the *L. nana* is less affected by drought. The kikuyu grass is being sprayed to prevent it encroaching into the site and will be planted with mānuka and tauhinu.

### **New bird record for Whitireia Park**

Robyn saw a tīkāka (reef heron) at Kaitawa Point recently. This species is native to Aotearoa/New Zealand, Eastern Asia, the tropical Pacific islands, Australia and has a national threats status of Nationally Endangered. It is a very shy bird so is hard to get close for a good photo. The photo shows the tīkāka sitting between two shags.



### **Predator Control**

There have been 18 catches over the last period, year to date 123 catches. Last month, 7 rats, 4 mustelids and 2 mice.

The reinstatement of the baits on Gloaming Hill and Onepoto foreshore was successful, all the bait stations had all the bait eaten in 4 to 6 weeks. They have been replenished and we are awaiting on new bait supplies from Greater Wellington. We have 2 new volunteers who are servicing these bait stations.

Our next project is to deploy 12 traps and mouse bait stations adjacent to Onehunga Bay Bush Block to replace the ones that were "mowed" by the hay maker.

### **Spraying**

A patch of Japanese honeysuckle has been sprayed near Kaitawa Point. It will need follow up. Kikuyu which was smothering sedges and flaxes beside the track behind Onehunga Bay have also been sprayed with a grass-selective spray. The spray does not affect sedges and they will now be able to out-compete the kikuyu for a season. It is likely another spray will be needed in Spring.

Since then, it has been too dry to spray as drought stressed plants are less likely to be controlled well. The clover in the dunes at Kaiaua Bay will be sprayed once we get regular rain.

### **Lizard protection and monitoring**

A university student undertook some lure research on our lizard monitoring site. He investigated the relative attractiveness of lures (pear vs protein based) for lizards. He did a capture and release of lizards in pitfalls and will compare the catch rates between the two different kinds of lure. We are looking forward to his report when completed.

### **Management Plan interim review**

In January, the group provided a considerable number of ideas for the Whitireia Park Management Plan interim review 2021/22 – issues and opportunities but have heard nothing since from the Park Department.

### **Volunteer hours:**

Quarter	Trapping	Lizard project	Seed collection	Planting	Site Maintenance	Spraying	Admin/Promotion
To 26 April 2022	40	32	12	0	14	5	16

### **New members:**

We continue to build our Facebook following and currently have 439 members. Posts are usually regular and many posts are shared to others, so exposure of the park and its biodiversity is considerable. The Facebook page can be found

<https://www.facebook.com/groups/1055760224479856>

Photos of Whitireia maunga just before the storm of 23 March hit



Chris Gibbons, Rob Hughes, Angus Hulme-Moir, Lisa Casasanto, Robyn Smith, Edmund Stephen-Smith, Robert Stratford.

WPRG Coordinators

April 2022