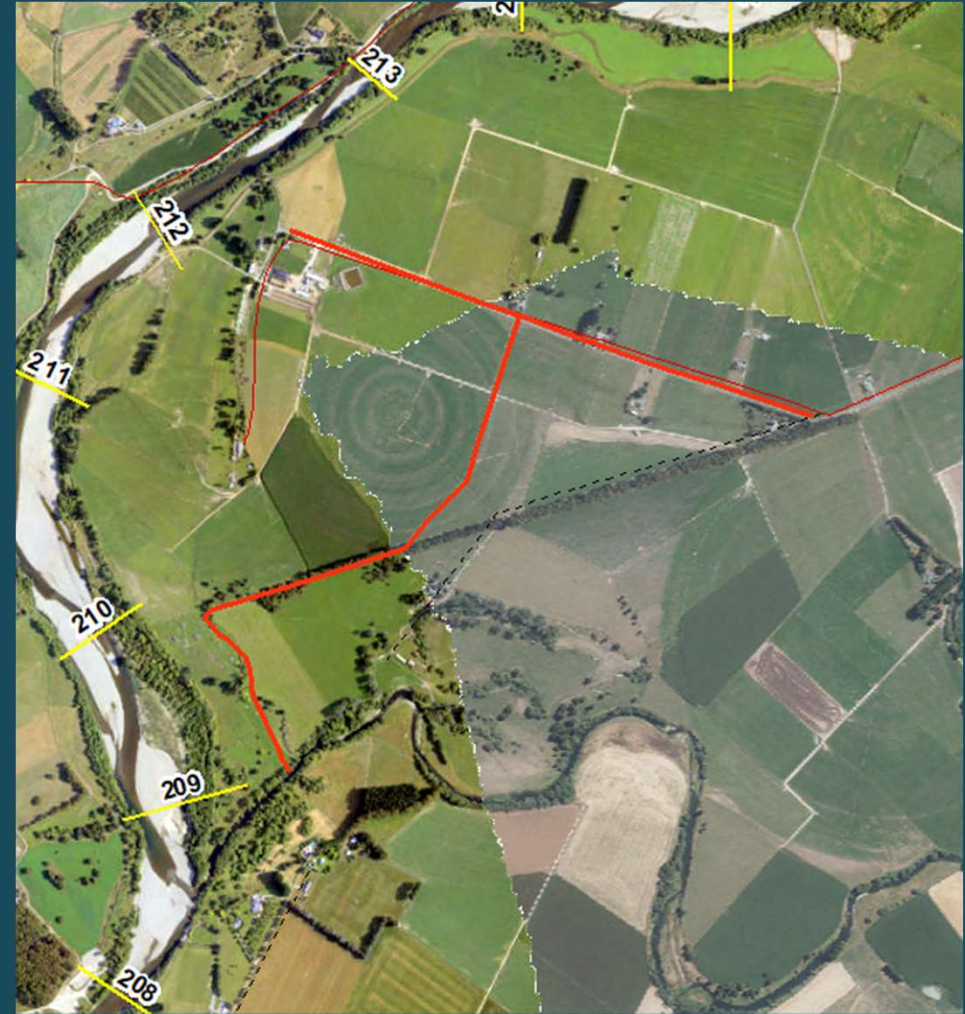


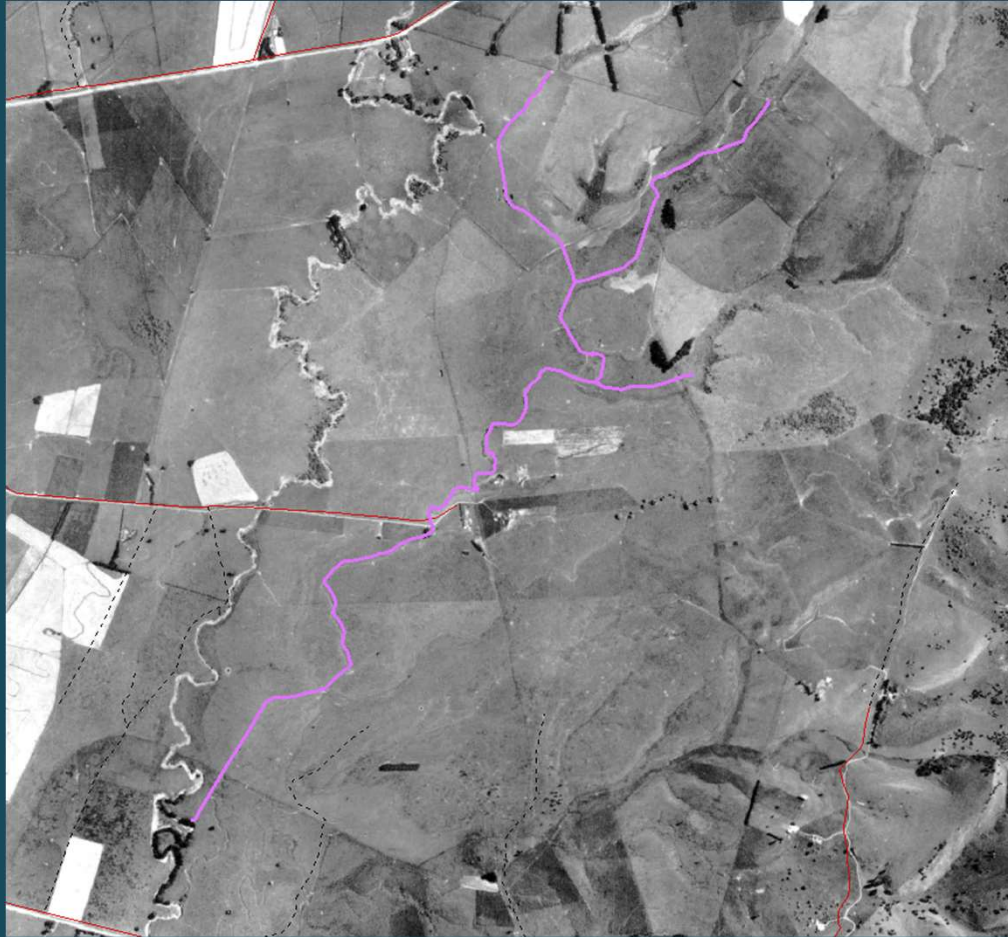
Otahoua & Te Whiti Drainage Schemes



Purpose of meeting

- Summary of scheme
- Works completed in last few years and financial statement
- Introduce the review of the scheme
 - Scheme extent
 - Maintenance work plans
 - Funding
 - Scheme members input into management of the scheme
- Next steps

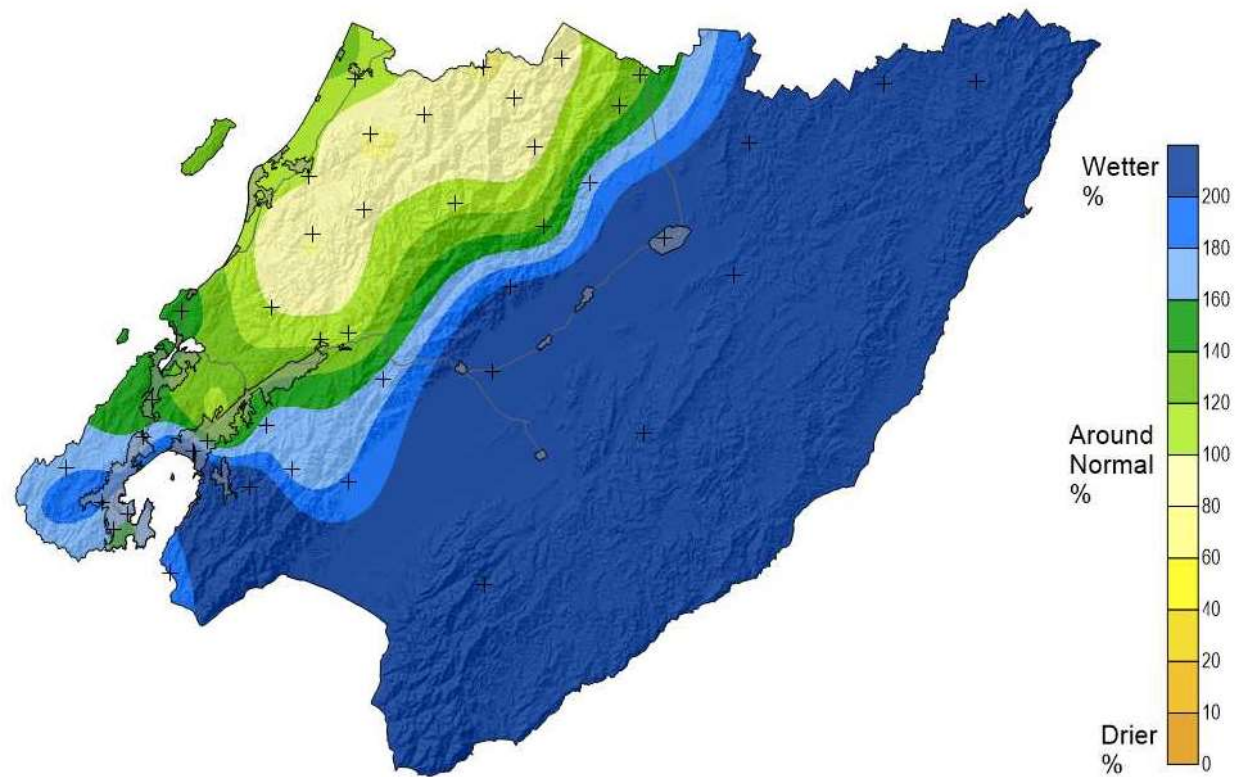
Otahoua & Te Whiti Drainage Schemes



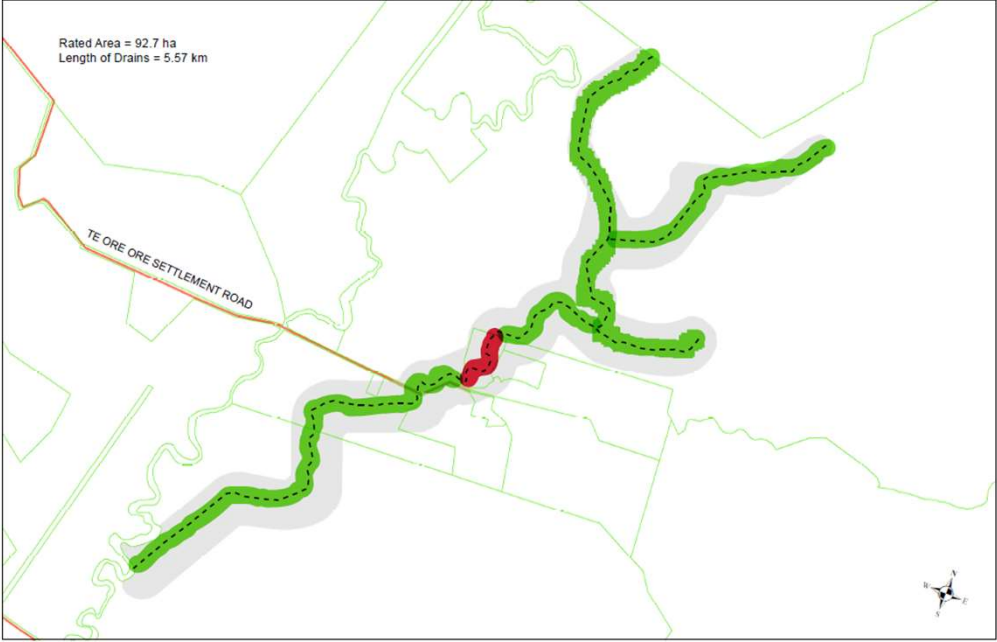
A wet Summer!



90 Day Rainfall Anomaly (%) as at 23-02-2023



Spray maps



Otahoua Drainage Scheme

Maple Programme

1:14,000



Te Whiti Drainage Scheme

Maple Programme

1:7,500

Financial statements

Greater Wellington Regional Council

Flood Protection Department

Otahoua Drainage Scheme

Financial Statement August 2023

ITEM	ACTUAL	ACTUAL	ACTUAL
	2020/21	2021/22	2022/23
REVENUE			
Special Rates	\$3,091	\$3,152	\$3,215
District Councils	\$0	\$0	\$0
Other Revenue	\$0	\$0	\$0
Interest on Reserves	\$261	\$187	\$135
TOTAL REVENUE	\$3,352	\$3,340	\$3,350
EXPENDITURE			
Works	\$982	\$3,218	\$1,294
Overheads	\$561	\$574	\$495
TOTAL EXPENDITURE:	\$1,543	\$3,792	\$1,789
SURPLUS/(DEFICIT) TO RESERVES	\$1,808	-\$452	\$1,562
Reserve Opening Balance	\$9,892	\$11,700	\$11,248
RESERVE CLOSING BALANCE	\$11,700	\$11,248	\$12,809

Greater Wellington Regional Council

Flood Protection Department

Te Whiti Drainage Scheme

Financial Statement August 2023

ITEM	ACTUAL	ACTUAL	ACTUAL
	2020/21	2021/22	2022/23
REVENUE			
Special Rates	\$1,389	\$1,417	\$1,445
District Councils	\$0	\$0	\$0
Other Revenue	\$0	\$0	\$0
Interest on Reserves	\$35	\$31	\$24
TOTAL REVENUE	\$1,424	\$1,448	\$1,469
EXPENDITURE			
Works	\$174	\$1,077	\$0
Overheads	\$252	\$347	\$314
TOTAL EXPENDITURE:	\$426	\$1,425	\$314
SURPLUS/(DEFICIT) TO RESERVES	\$998	\$23	\$1,155
Reserve Opening Balance	\$958	\$1,956	\$1,979
RESERVE CLOSING BALANCE	\$1,956	\$1,979	\$3,134

Financial position

Rates for Current Year 2023/2024

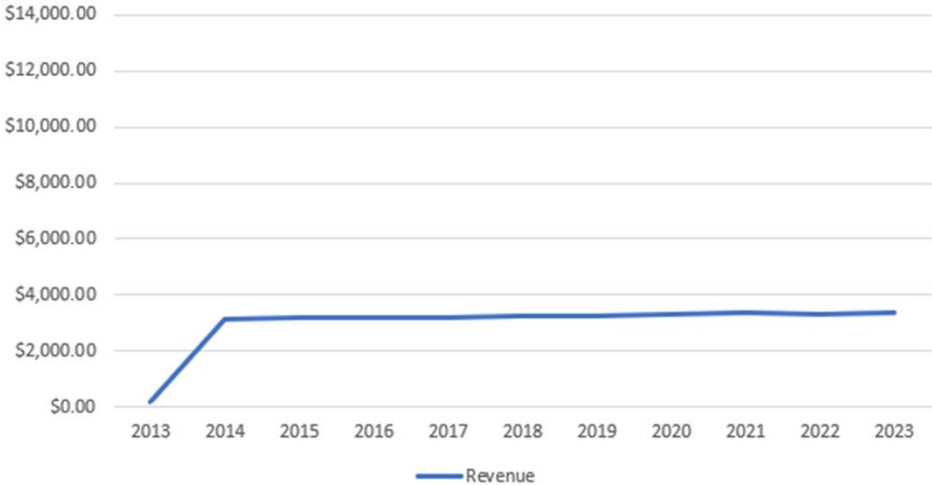
Type	Description (Basis)
4	Roading rate (L)
39	Sundry Facilities & Services (C)
54	Annual charge ()
59	Roading charge ()
89	GWRC General (C)
94	GWRC Public Transport (C)
103	GWRC Wellington Regional Economic Development (U)
114	Representation & Development (C)
124	Regulatory Services rate (C)
201	GWRC Te Kauru River Management (C)
250	469 Otahoua Class A (A)

Rates for Current Year 2023/2024

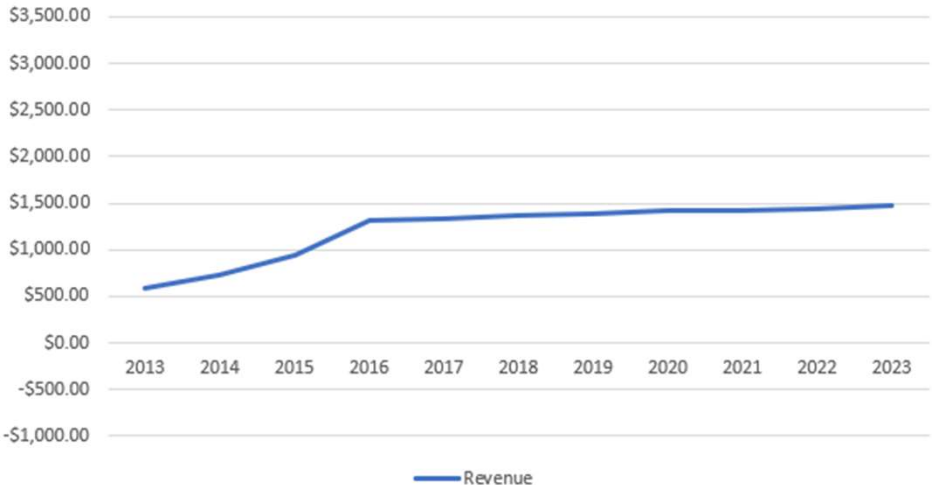
Type	Description (Basis)	Dis
5	Roading rate (L)	
40	Sundry Facilities & Services (C)	
55	Annual charge ()	
60	Roading charge ()	
90	GWRC General (C)	
95	GWRC Public Transport (C)	
104	GWRC Wellington Regional Economic Development (U)	
115	Representation & Development (C)	
125	Regulatory Services rate (C)	
201	GWRC Te Kauru River Management (C)	
253	470 Te Whiti Class A (A)	

Financial position

Otahoua



Te Whiti



Financial position

Otahoua

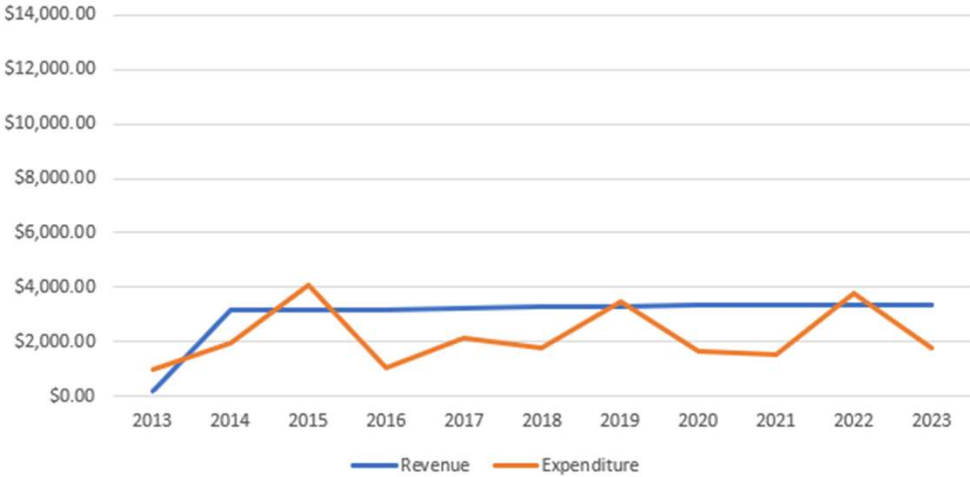
Financial contribution range	Number of scheme members
\$0-\$10	2
\$10-\$20	0
\$20-\$50	1
\$50-\$100	0
\$100-\$200	2
\$200-\$500	1
\$500-\$1000	1
\$1000+	1

Te Whiti

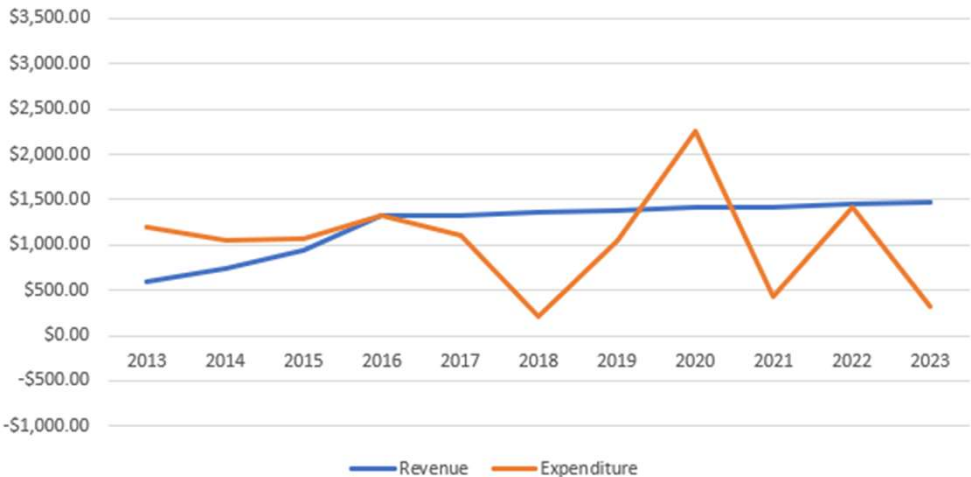
Financial contribution range	Number of scheme members
\$0-\$10	1
\$10-\$20	2
\$20-\$50	1
\$50-\$100	0
\$100-\$200	2
\$200-\$500	0
\$500-\$1000	0
\$1000+	1

Financial position

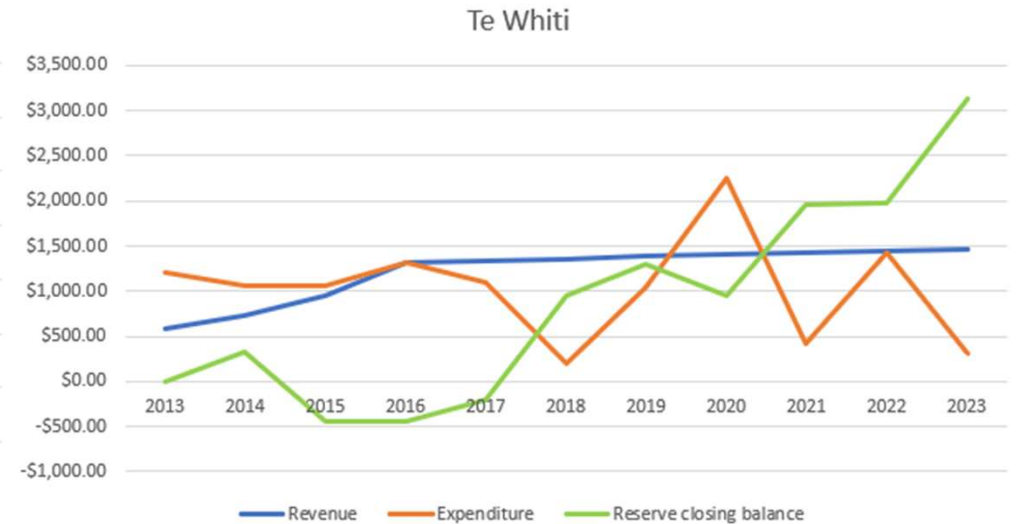
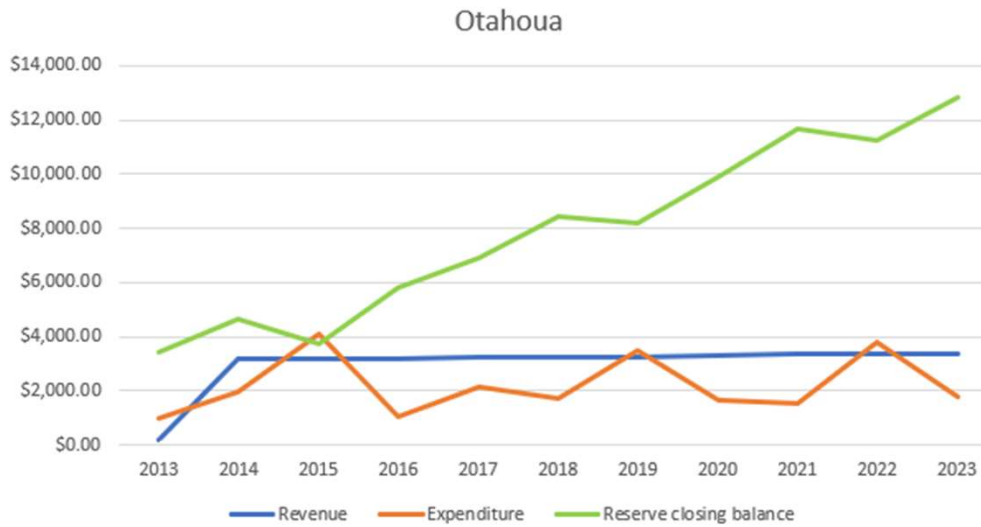
Otahoua



Te Whiti



Financial position



Some impacts on expenditure

- Stock exclusion rules
- Appearance of Celery Weed in the drain
- Health and Safety requirements
- Works can no longer be undertaken in house by GW
- Permitted activity rules for GW have changed.

Level of service

Current maintenance aspiration of the scheme:

- Annual herbicide weed spray
- Machine clean every 5/6 years
- Blockage removal eg: during/after rainfall event.

Other works are the responsibility of the landowner:

- Replacement of culverts/bridges
- Anything which requires consent eg: enlargement of drain
- Erosion repair
- Repairing connecting drains that are not part of the drainage system
- Repair of any damage caused by flooding.

Items for scheme members to consider:

For each scheme, scheme members to advise:

- If they think that the extent of the scheme requires adjustment.
- If they believe that the aspirational maintenance approach is correct, and if not then what alternatives should be considered.
- Whether they think that GW should be managing more maintenance activities, or fewer?
- The best way for scheme members to communicate with GW.

Future challenges

- Funding to match the maintenance strategy
- Ecology in the drain is being given more importance, leading to restrictions on how they can be maintained and what herbicides can be used in them.
- National Policy Statement for Freshwater Management 2020

2.1 Objective

- (1) The objective of this National Policy Statement is to ensure that natural and physical resources are managed in a way that prioritises:
 - (a) first, the health and well-being of water bodies and freshwater ecosystems
 - (b) second, the health needs of people (such as drinking water)
 - (c) third, the ability of people and communities to provide for their social, economic, and cultural well-being, now and in the future.

Suggested next steps

- Scheme members to consider maintenance of the drain and the items highlighted.
- Any further information can be requested from GW via the gravitydrains@gw.govt.nz email address shown on the website.
- GW can analyse the impact of different maintenance strategies or approaches on the targeted rates.
- Scheme members to consider how they want to manage liaison between themselves and GW.
- GW will collate all responses and investigations and arrange a follow up meeting with scheme members in around 2-3 months time.