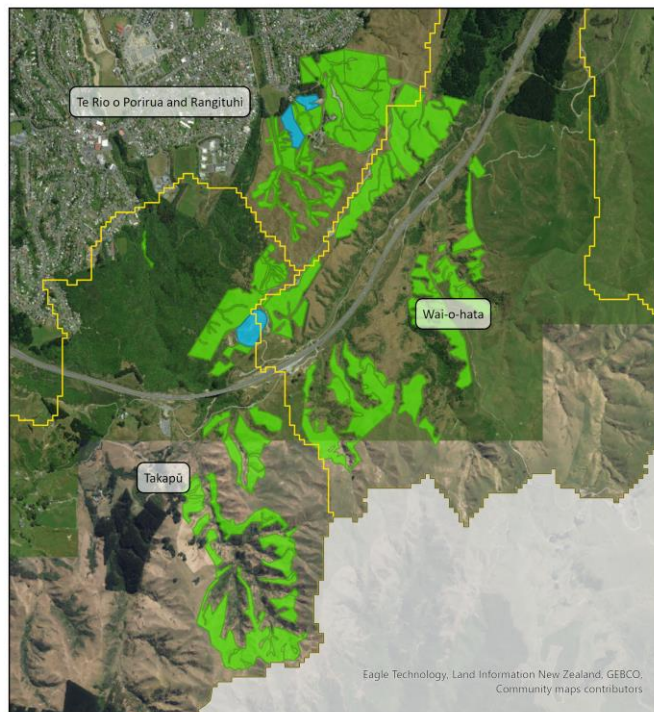
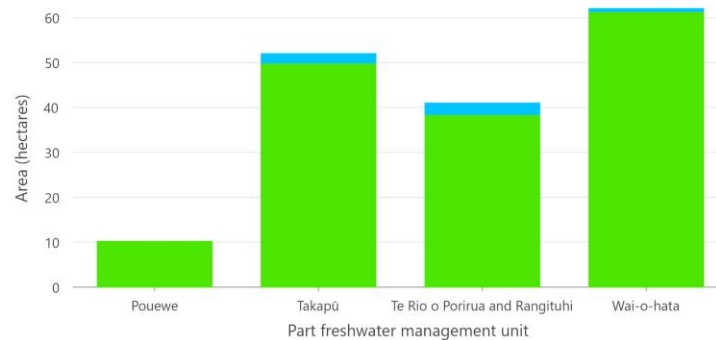


## Appendix 6: GWRC's Recloaking Papatuanuku Progress



Recloaking Papatuanuku restoration in Te Awarua-o-Porirua 2021-24, by part FMU



Between 2021 and 2024, **166.27 hectares** of land within Belmont Regional Park and Battle Hill Farm Forest Park has been planted under the Recloaking Papatuanuku programme, within the Te Awarua-o-Porirua Whaitua.

Restoration planting under the Recloaking Papatuanuku programme, 2021-2024

■ Establishment species  
■ Seeding